



Wall Types:

1



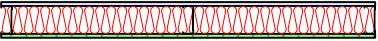
USG Boral SB.3A or sim. (Nom. 118 wall width) 1 x 13mm REGULAR pbd, steel studs on 92mm plates, 1 x 13mm REGULAR pbd. 90G11 glass wool insulation.

2




USG Boral SB.3C or sim. (Nom. 118 wall width) 1 x 13mm SOUNDSTOP pbd, steel studs on 92mm plates, 1 x 13mm SOUNDSTOP pbd. 90G11 glass wool insulation.

3




USG Boral SB.3E or sim. (Nom. 118 wall width) 1 x 13mm REGULAR pbd, steel studs on 92mm plates, 1 x 13mm WET AREA pbd. 90G11 glass wool insulation.

4




USG Boral SB.3B or sim. (Nom. 118 wall width) 1 x 13mm WET AREA pbd, steel studs on 92mm plates, 1 x 13mm WET AREA pbd. 90G11 glass wool insulation.

5




USG Boral SB.3B or sim. (Nom. 148 wall width) 1 x 13mm WET AREA pbd, steel studs on 92mm plates, 1 x PanelRib cladding. 90G11 glass wool insulation.

5a




USG Boral SB.3B or sim. (Nom. 123 wall width) 1 x 13mm WET AREA pbd, steel studs on 92mm plates, 1 x PanelRib cladding. 90G11 glass wool insulation.

6



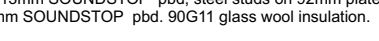
USG Boral SS120.1B or sim. (Nom. 148 wall width) 2 x 13mm SOUNDSTOP pbd, steel studs on 92mm plates, 2 x 13mm SOUNDSTOP pbd, 1 x PanelRib cladding. 90G11 glass wool insulation.

7




USG Boral SB.4C or sim. (Nom. 131 wall width) 1 x 13mm SOUNDSTOP pbd, steel studs on 92mm plates, 1 x 13mm SOUNDSTOP pbd. 90G11 glass wool insulation.

8



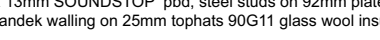
USG Boral SS120.1B or sim. (Nom. 144 wall width) 2 x 13mm MULTISTOP pbd, steel studs on 92mm plates, 2 x 13mm MULTISTOP pbd. 90G11 glass wool insulation.

8a



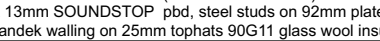
USG Boral SS.4C or sim. (Nom. 167 wall width) 2 x 13mm SOUNDSTOP pbd, steel studs on 92mm plates, 1 x Spandek walling on 25mm tophats 90G11 glass wool insulation.

9




USG Boral SS.4C or sim. (Nom. 167 wall width) 2 x 13mm SOUNDSTOP pbd, steel studs on 92mm plates, 1 x Spandek walling on 25mm tophats 90G11 glass wool insulation.

9a



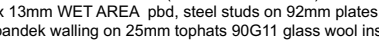
USG Boral SS.4C or sim. (Nom. 267 wall width) 2 x 13mm SOUNDSTOP pbd, steel studs on 92mm plates, 100mm baton, 1 x Spandek walling on 25mm tophats 90G11 glass wool insulation.

10

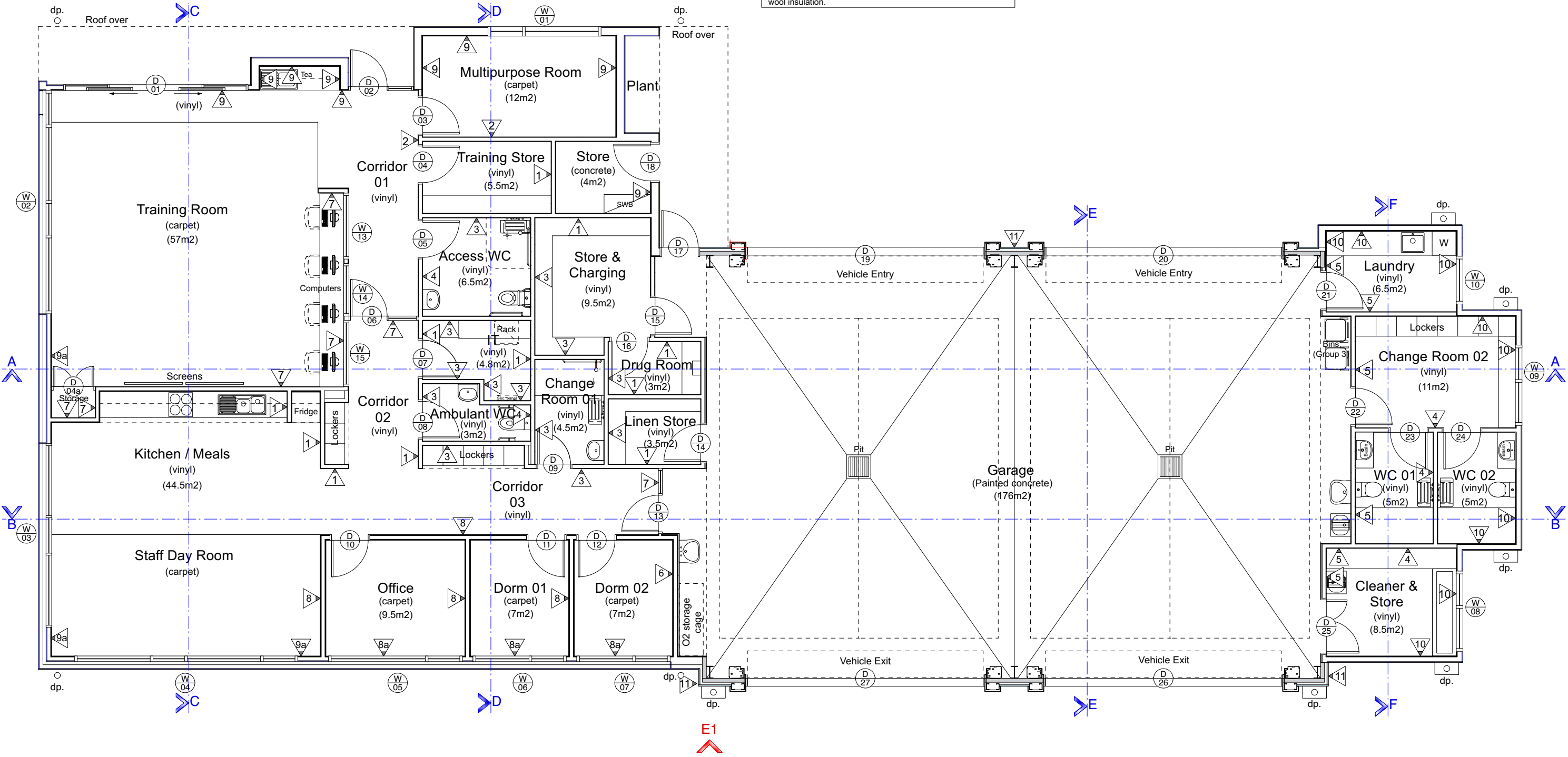


USG Boral SS.4B or sim. (Nom. 167 wall width) 2 x 13mm WET AREA pbd, steel studs on 92mm plates, 1 x Spandek walling on 25mm tophats 90G11 glass wool insulation.

11



Colorbond Lysaght zenith enseam cladding. or sim. (Nom. 199 wall width) fixed to 61mm Tophat sections on 100x5 SHS columns.



**Notes**

1. Do not scale drawings.

2. All dimensions in millimetres unless noted otherwise.

3. All work carried out shall be in accordance with Australian Standards, the NCC, local authority by-laws & regulations and manufacturer's specifications.

4. Verify all dimensions on site before commencement of work.

5. All drawings shall be read in conjunction with architects and consultants specifications, details and supplied additional documents.

6. Any discrepancies shall be referred to the Architect.

☐ The first issue of the document.

☐ Not controlled. Revisions may be made without notice.

☒ A controlled document. Revisions will be advised.

☐ A complete revision. Remove previous issues from use.

Amendments

No.	Date	Notes
-----	------	-------

**PRELIMINARY**

client

**Department of Health**



Tasmania

Explore the possibilities

project

**Ambulance Tas**

**King Island Ambulance Station**

35 Edward Street, Currie, King Island, Tasmania

tender no. \_\_\_\_\_

drawing title

**Floor Plan**

project no. **RCA2410KI**

scale **1:100 @ A3**

designed	RC	checked	RCA
drawn	RH	approved	RCA

printed **30th January 2025**

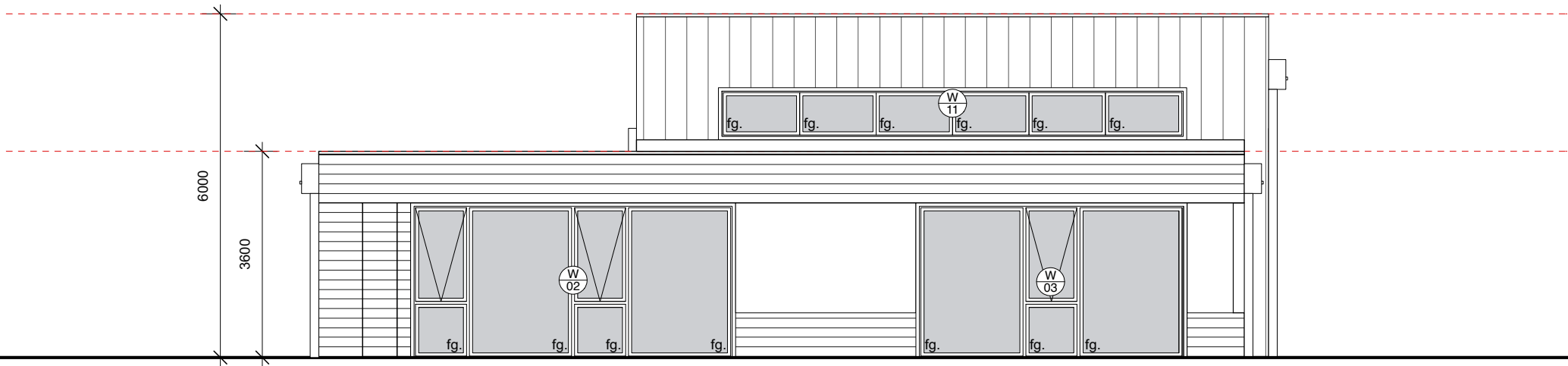
drawing no. **RCA2410KI-10-01** issue **DD**

**ROBERT CARROLL & ASSOCIATES ARCHITECTS**

68 Elphin Road - East Launceston Tas. 7250 Ph: 03 6334 6134 rob@robertcarroll.com.au



Elevation 01



Elevation 02

Notes

1. Do not scale drawings.
2. All dimensions in millimetres unless noted otherwise.
3. All work carried out shall be in accordance with Australian Standards, the NCC, local authority by-laws & regulations and manufacturer's specifications.
4. Verify all dimensions on site before commencement of work.
5. All drawings shall be read in conjunction with architects and consultants specifications, details and supplied additional documents.
6. Any discrepancies shall be referred to the Architect.

- The first issue of the document.
- Not controlled. Revisions may be made without notice.
- A controlled document. Revisions will be advised.
- A complete revision. Remove previous issues from use.

Amendments

No. | Date | Notes

**PRELIMINARY**

client  
**Department of Health**



project  
**Ambulance Tas  
King Island Ambulance Station**

**35 Edward Street, Currie, King  
Island, Tasmania**

tender no.

drawing title  
**Elevations 01 & 02**

project no. **RCA2410KI**

scale **1:100 @ A3**

designed **RC** | checked **RCA**

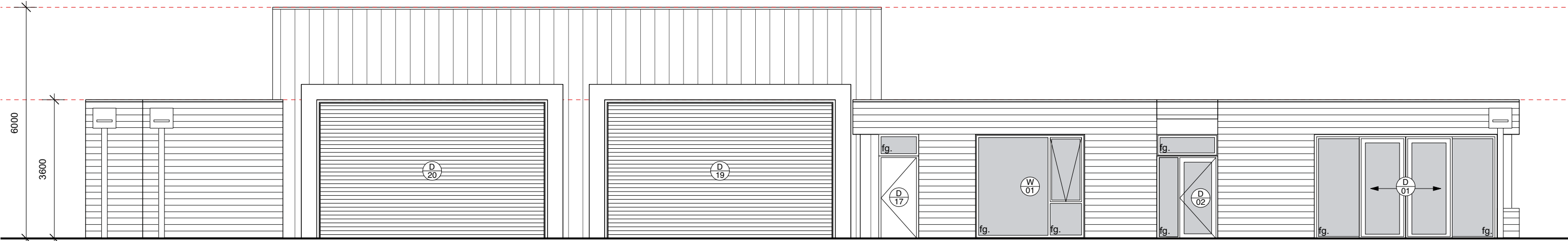
drawn **RH** | approved **RCA**

printed **30th January 2025**

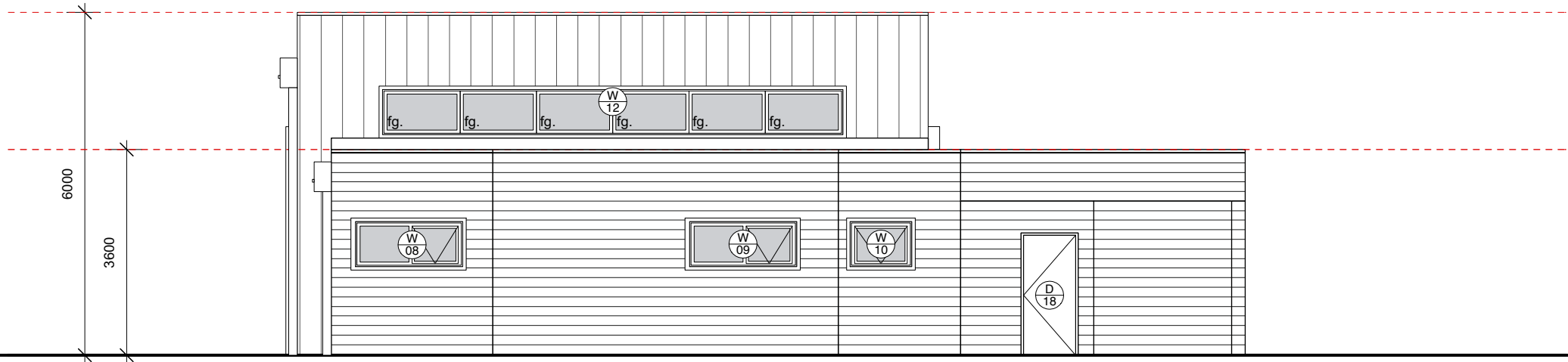
drawing no. **RCA2410KI-20-01** | issue **DD**

**ROBERT CARROLL  
& ASSOCIATES  
ARCHITECTS**

68 Elphin Road - East Launceston  
Tas. 7250 - Ph: 03 6334 6134  
rob@robertcarroll.com.au



Elevation 03



Elevation 04

Notes

1. Do not scale drawings.
2. All dimensions in millimetres unless noted otherwise.
3. All work carried out shall be in accordance with Australian Standards, the NCC, local authority by-laws & regulations and manufacturer's specifications.
4. Verify all dimensions on site before commencement of work.
5. All drawings shall be read in conjunction with architects and consultants specifications, details and supplied additional documents.
6. Any discrepancies shall be referred to the Architect.

- The first issue of the document.
- Not controlled. Revisions may be made without notice.
- A controlled document. Revisions will be advised.
- A complete revision. Remove previous issues from use.

Amendments  
No. | Date | Notes

**PRELIMINARY**



client  
**Department of Health**  
**Ambulance Tas**  
**King Island Ambulance Station**  
35 Edward Street, Currie, King Island, Tasmania  
tender no. \_\_\_\_\_

drawing title  
**Elevations 03 & 04**  
project no. **RCA2410KI**

scale **1:100 @ A3**  
designed RC | checked RCA  
drawn RH | approved RCA  
printed **30th January 2025**  
drawing no. **RCA2410KI-20-02** | issue DD

**ROBERT CARROLL & ASSOCIATES ARCHITECTS**  
68 Elphin Road - East Launceston Tas. 7250 - Ph: 03 6334 6134  
rob@robertcarroll.com.au

All wall mounted dispensers, brackets and baskets are supplied by AT and installed by contractor. Exact location to be confirmed on site by AT.



4. Verify all dimensions on site before commencement of work.
5. All drawings shall be read in conjunction with architects and consultants specifications, details and supplied additional documents.
6. Any discrepancies shall be referred to the Architect.

- ☐ The first issue of the document.
- ☐ Not controlled. Revisions may be made without notice.
- ☒ A controlled document. Revisions will be advised.
- ☐ A complete revision. Remove previous issues from use.

# PRELIMINARY



tender no.

project no.	<b>RCA2410KI</b>
-------------	------------------

drawing no. **BCA 2410 KL 10 01**

68 Elphin Road - East Launceston  
Tas. 7250 - Ph: 03 6334 6134  
rob@robertcarroll.com.au

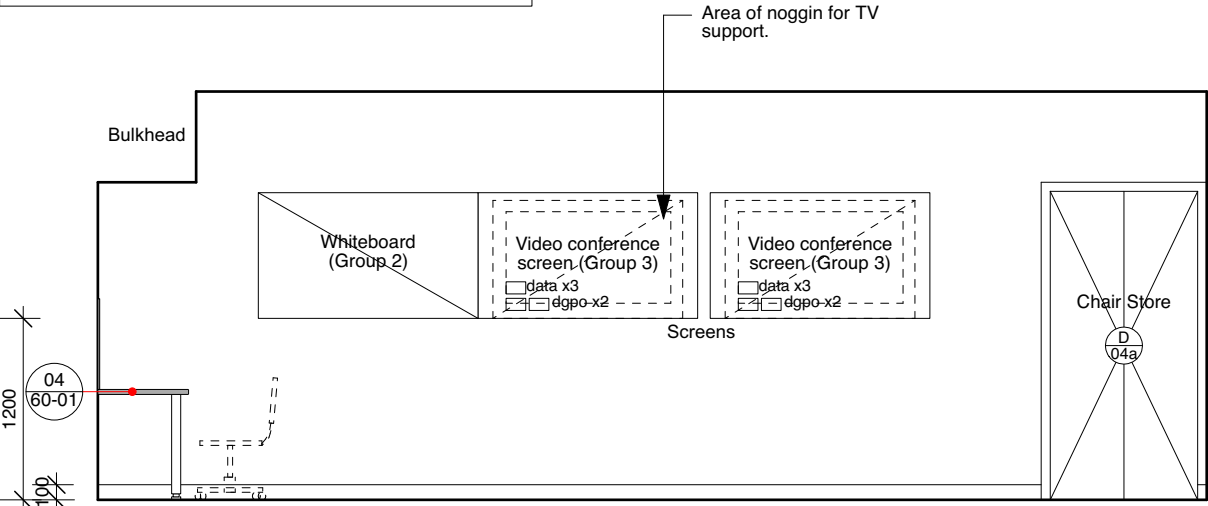
Note:

Group 1 items are supplied and installed by the contractor i.e. everything new as drawn.

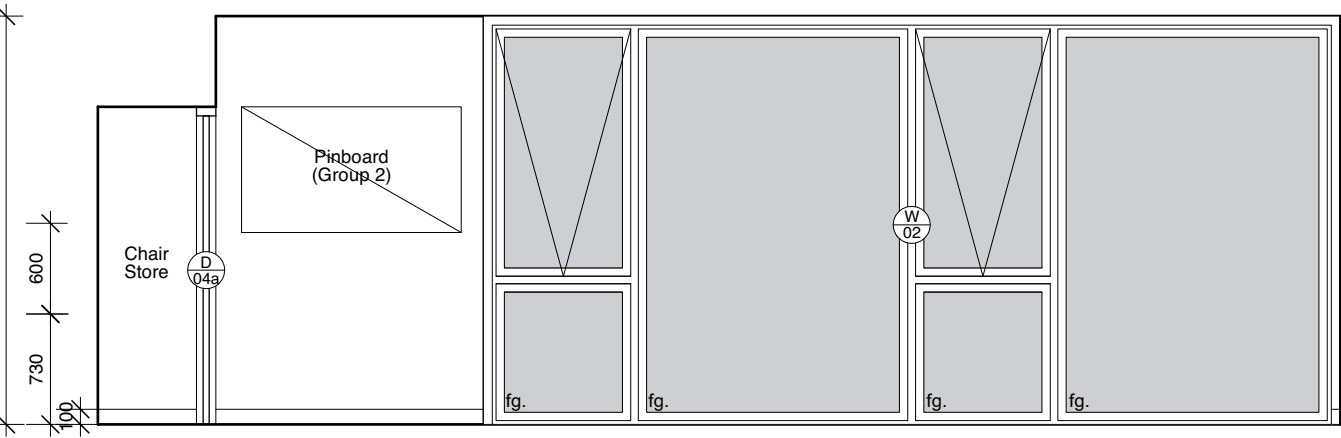
Group 2 items are supplied by AT and installed by the contractor.

Group 3 items are supplied by AT and installed by AT.

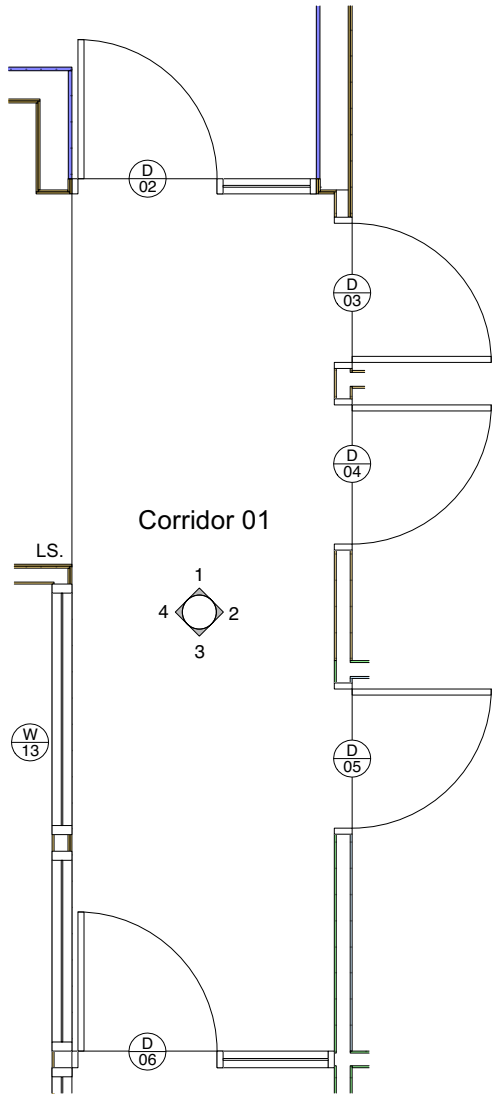
All wall mounted dispensers, brackets and baskets are supplied by AT and installed by contractor. Exact location to be confirmed on site by AT.



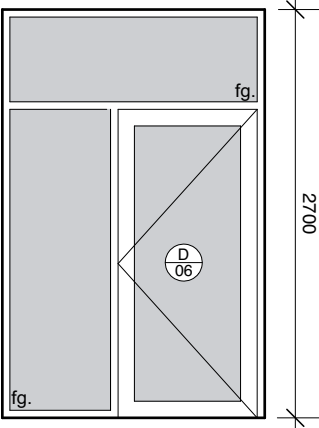
Elevation 3



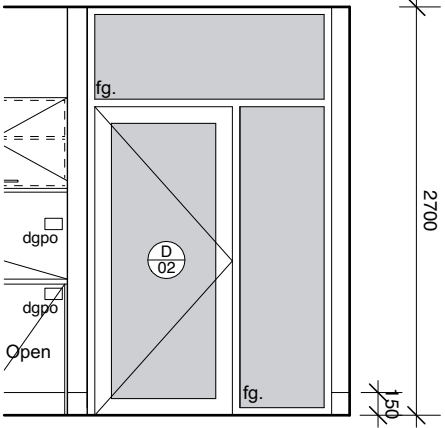
Elevation 4



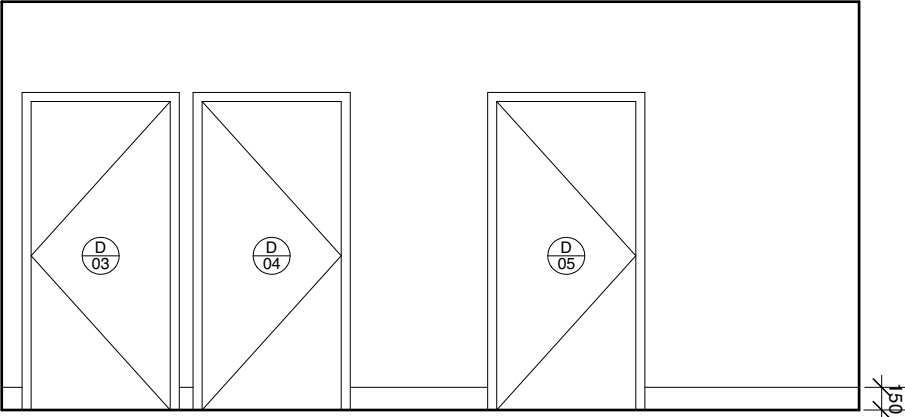
Plan



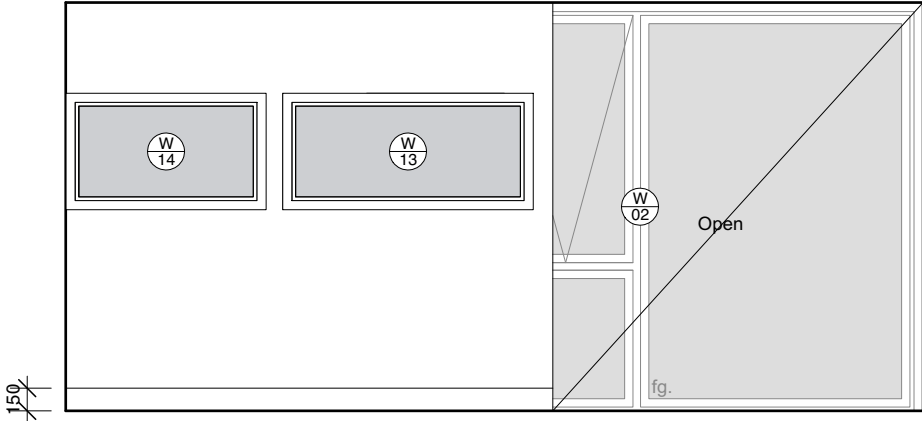
Elevation 3



Elevation 1



Elevation 2



Elevation 4

Notes

1. Do not scale drawings.
2. All dimensions in millimetres unless noted otherwise.
3. All work carried out shall be in accordance with Australian Standards, the NCC, local authority by-laws & regulations and manufacturer's specifications.
4. Verify all dimensions on site before commencement of work.
5. All drawings shall be read in conjunction with architects and consultants specifications, details and supplied additional documents.
6. Any discrepancies shall be referred to the Architect.

- The first issue of the document.
- Not controlled. Revisions may be made without notice.
- A controlled document. Revisions will be advised.
- A complete revision. Remove previous issues from use.

Amendments  
No. | Date | Notes

**PRELIMINARY**

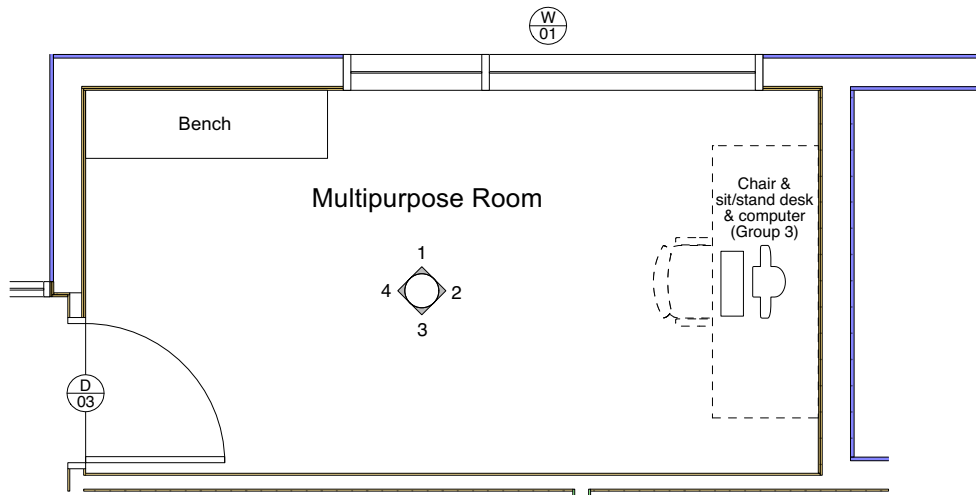
client  
**Department of Health**  
  
Tasmania  
Explore the possibilities

project  
**Ambulance Tas  
King Island Ambulance Station**  
35 Edward Street, Currie, King  
Island, Tasmania  
tender no.

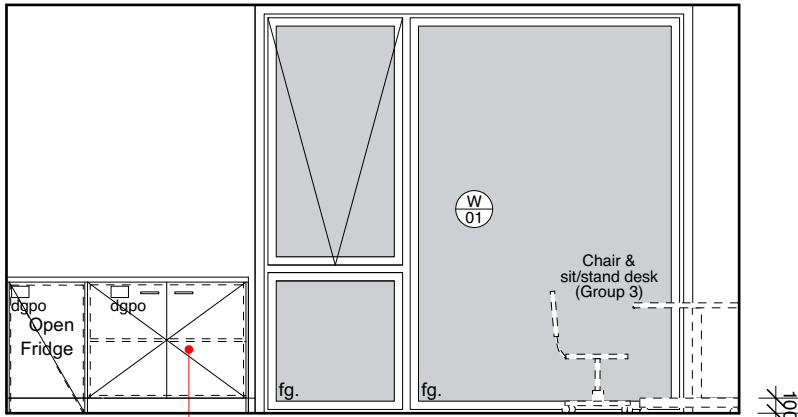
drawing title  
**Training Room &  
Circulation 01  
1:50 Room Layouts  
pg 02**  
project no. **RCA2410KI**

scale **1:50 @ A3**  
designed **RC** | checked **RCA**  
drawn **RH** | approved **RCA**  
printed **30th January 2025**  
drawing no. **RCA2410KI-40-02** | issue **DD**

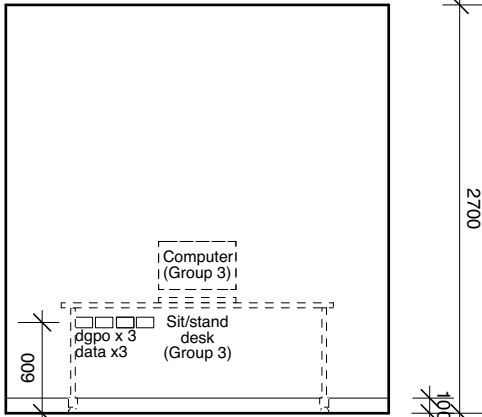
**ROBERT CARROLL  
& ASSOCIATES  
ARCHITECTS**  
68 Elphin Road - East Launceston  
Tas. 7250 - Ph: 03 6334 6134  
rob@robertcarroll.com.au



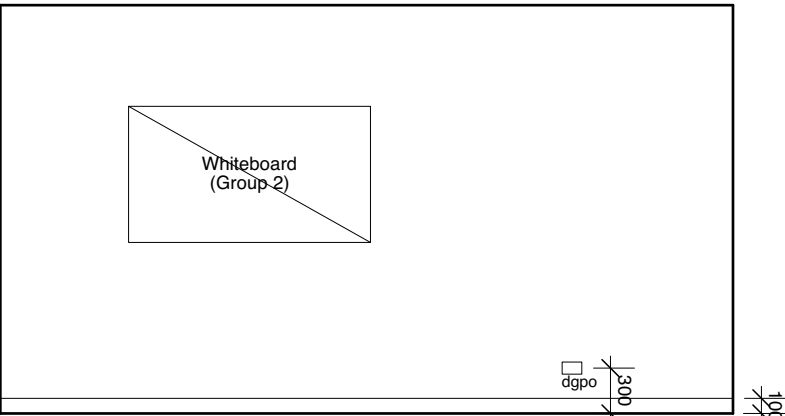
Plan



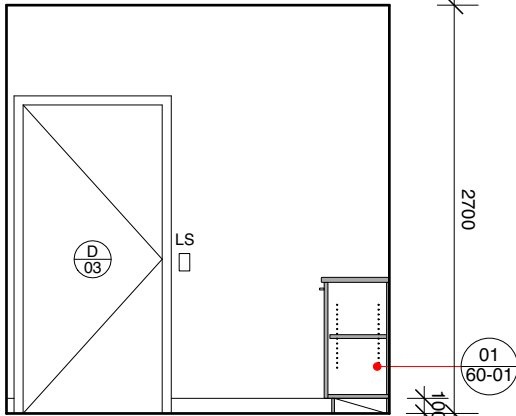
Elevation 1



Elevation 2



Elevation 3



Elevation 4

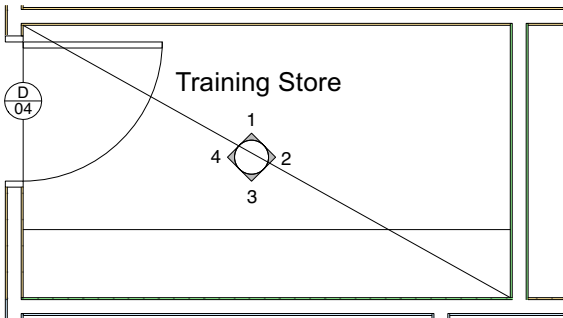
Note:

Group 1 items are supplied and installed by the contractor i.e. everything new as drawn.

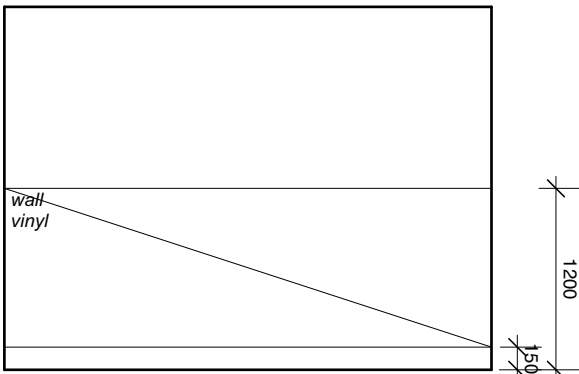
Group 2 items are supplied by AT and installed by the contractor.

Group 3 items are supplied by AT and installed by AT.

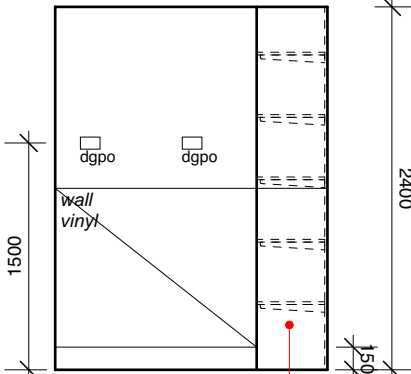
All wall mounted dispensers, brackets and baskets are supplied by AT and installed by contractor. Exact location to be confirmed on site by AT.



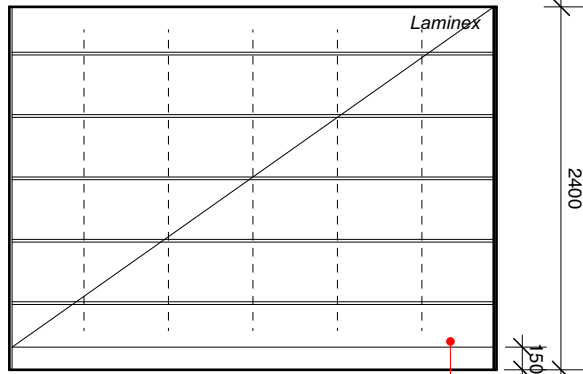
Plan



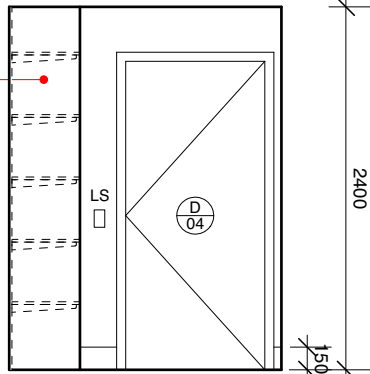
Elevation 1



Elevation 2



Elevation 3



Elevation 4

Notes

1. Do not scale drawings.
2. All dimensions in millimetres unless noted otherwise.
3. All work carried out shall be in accordance with Australian Standards, the NCC, local authority by-laws & regulations and manufacturer's specifications.
4. Verify all dimensions on site before commencement of work.
5. All drawings shall be read in conjunction with architects and consultants specifications, details and supplied additional documents.
6. Any discrepancies shall be referred to the Architect.

- The first issue of the document.
- Not controlled. Revisions may be made without notice.
- A controlled document. Revisions will be advised.
- A complete revision. Remove previous issues from use.

Amendments

No.	Date	Notes
-----	------	-------

**PRELIMINARY**

client  
**Department of Health**  
  
Tasmania  
Explore the possibilities

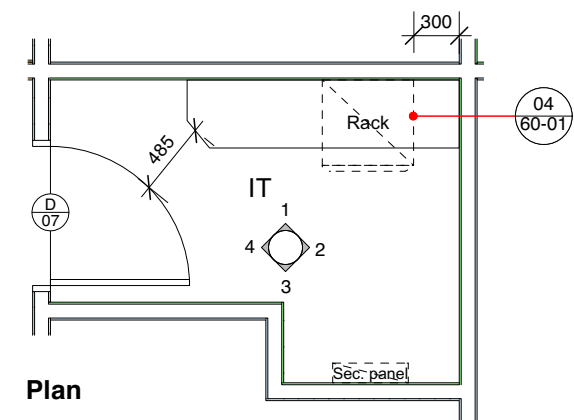
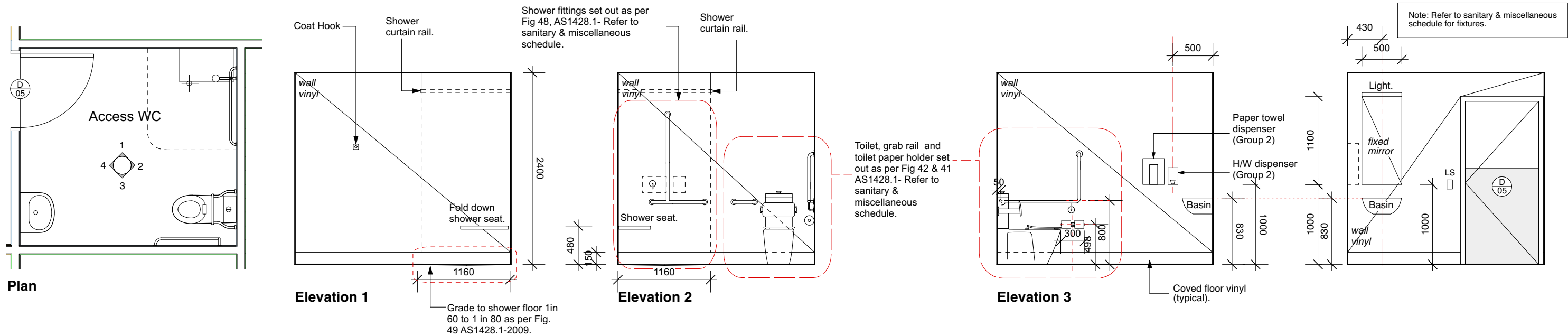
project  
**Ambulance Tas**  
**King Island Ambulance Station**  
35 Edward Street, Currie, King Island, Tasmania  
tender no.

drawing title  
**Multipurpose**  
**Room & Training**  
**Store**  
**1:50 Room Layouts**  
project no. **RCA2410KI**

scale **1:50 @ A3**  
designed **RC** | checked **RCA**  
drawn **RH** | approved **RCA**  
printed **30th January 2025**  
drawing no. **RCA2410KI-40-03** | issue **DD**

**ROBERT CARROLL**  
**& ASSOCIATES**  
**ARCHITECTS**  
68 Elphin Road - East Launceston  
Tas. 7250 - Ph: 03 6334 6134  
rob@robertcarroll.com.au





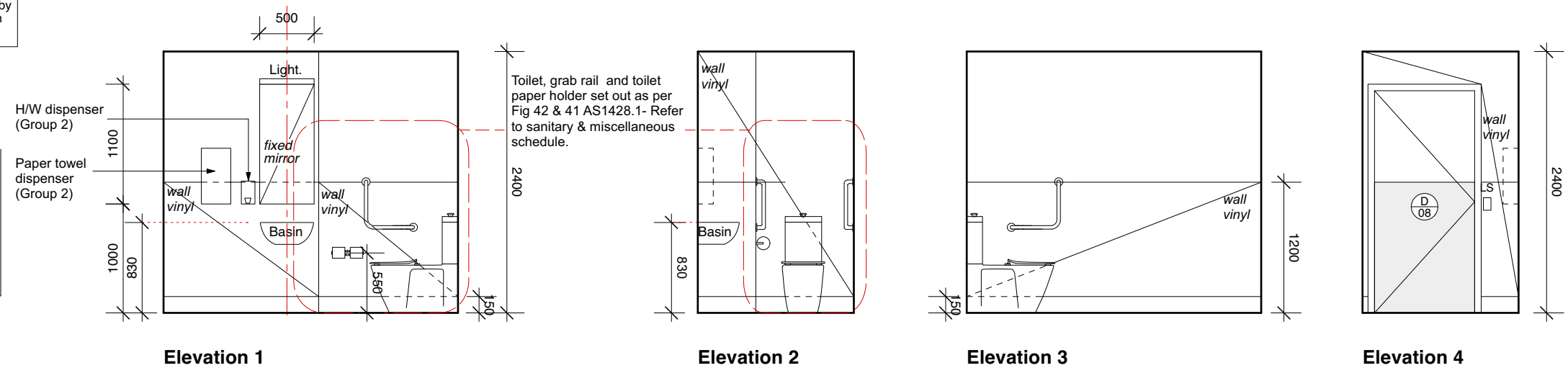
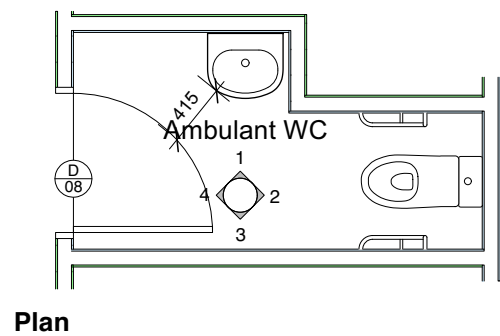
Note:

Group 1 items are supplied and installed by the contractor i.e. everything new as drawn.

Group 2 items are supplied by AT and installed by the contractor.

Group 3 items are supplied by AT and installed by AT.

All wall mounted dispensers, brackets and baskets are supplied by AT and installed by contractor. Exact location to be confirmed on site by AT.



#### Notes

1. Do not scale drawings.
2. All dimensions in millimetres unless noted otherwise.
3. All work carried out shall be in accordance with Australian Standards, the NCC, local authority by-laws & regulations and manufacturer's specifications.
4. Verify all dimensions on site before commencement of work.
5. All drawings shall be read in conjunction with architects and consultants specifications, details and supplied additional documents.
6. Any discrepancies shall be referred to the Architect.

- The first issue of the document.
- Not controlled. Revisions may be made without notice.
- A controlled document. Revisions will be advised.
- A complete revision. Remove previous issues from use.

Amendments

No.	Date	Notes
-----	------	-------

**PRELIMINARY**

client  
**Department of Health**

Tasmania  
Explore the possibilities

project  
**Ambulance Tas**  
**King Island Ambulance Station**

35 Edward Street, Currie, King Island, Tasmania

tender no.

drawing title  
**Access WC, IT & Ambulant WC**  
**1:50 Room Layouts**

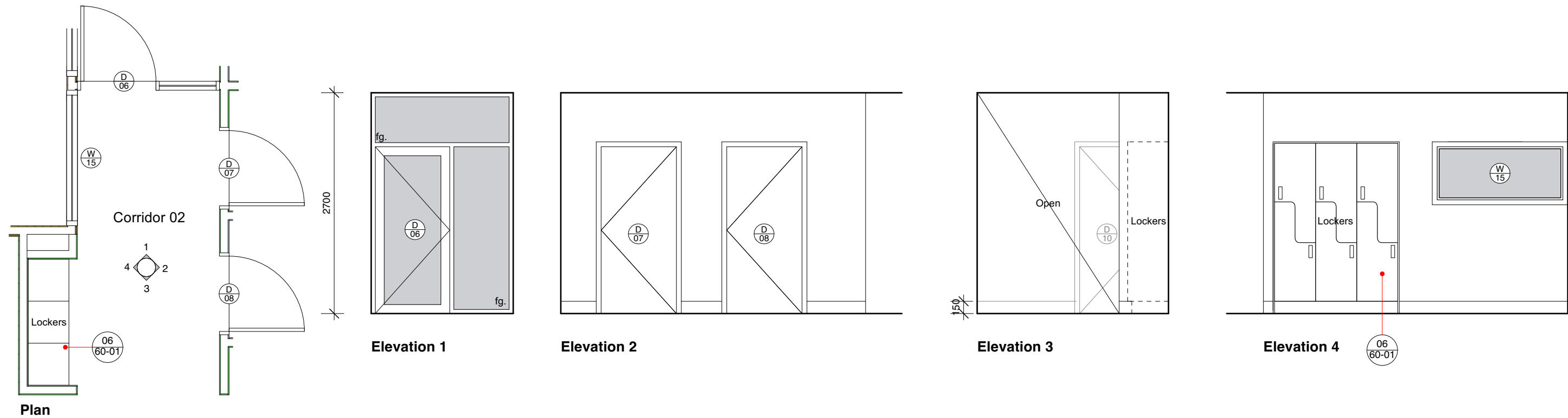
project no. **RCA2410KI**

scale **1:50 @ A3**

designed	RC	checked	RCA
drawn	RH	approved	RCA
printed	30th January 2025		
drawing no.	<b>RCA2410KI-40-04</b>		issue
			DD

**ROBERT CARROLL & ASSOCIATES**  
**ARCHITECTS**

68 Elphin Road - East Launceston  
Tas. 7250 - Ph: 03 6334 6134  
rob@robertcarroll.com.au



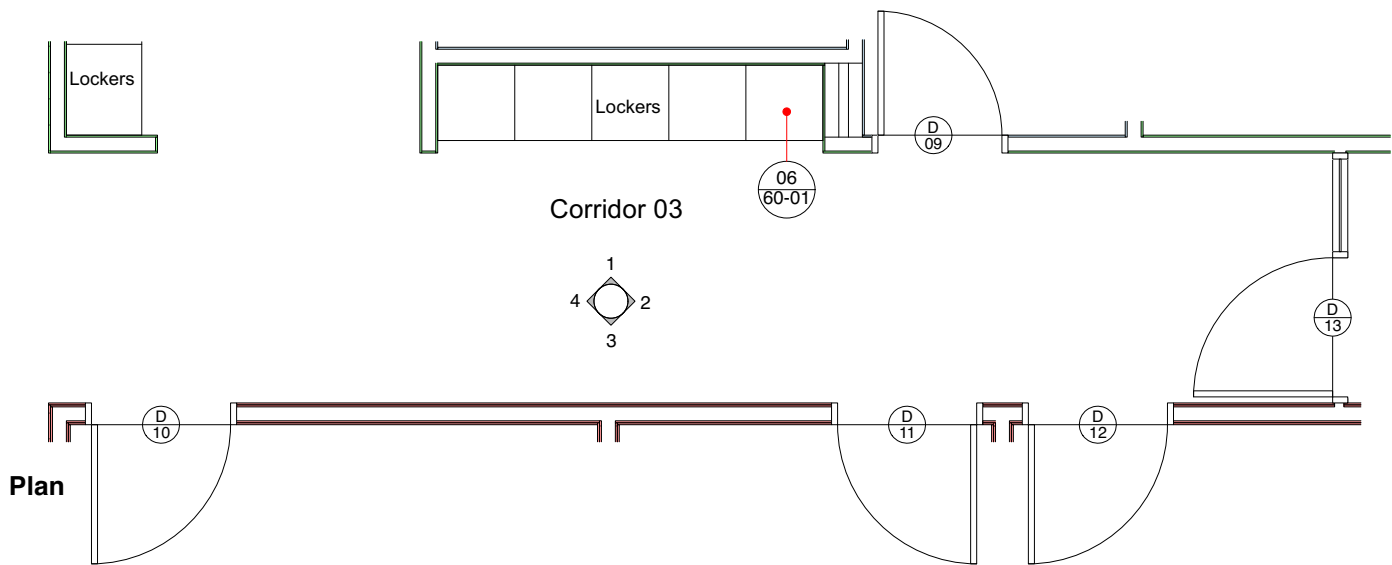
Plan

Elevation 1

Elevation 2

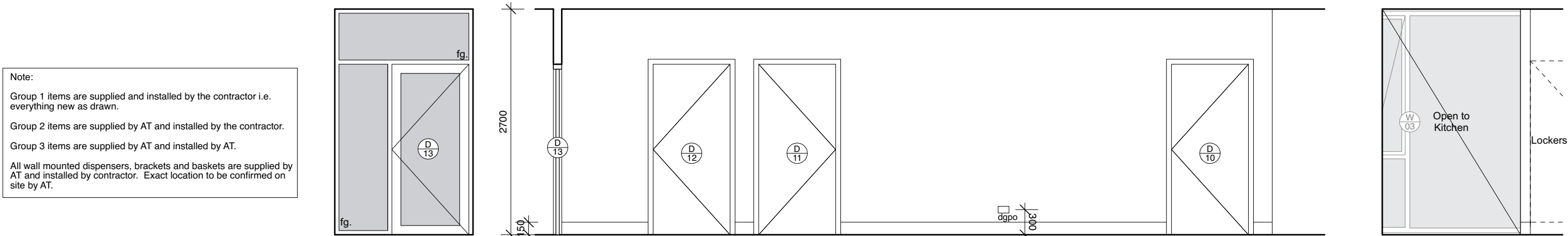
Elevation 3

Elevation 4



Plan

Elevation 1



Elevation 2

Elevation 3

Elevation 4

Note:

Group 1 items are supplied and installed by the contractor i.e. everything new as drawn.

Group 2 items are supplied by AT and installed by the contractor.

Group 3 items are supplied by AT and installed by AT.

All wall mounted dispensers, brackets and baskets are supplied by AT and installed by contractor. Exact location to be confirmed on site by AT.

Notes

1. Do not scale drawings.
2. All dimensions in millimetres unless noted otherwise.
3. All work carried out shall be in accordance with Australian Standards, the NCC, local authority by-laws & regulations and manufacturer's specifications.
4. Verify all dimensions on site before commencement of work.
5. All drawings shall be read in conjunction with architects and consultants specifications, details and supplied additional documents.
6. Any discrepancies shall be referred to the Architect.

- The first issue of the document.
- Not controlled. Revisions may be made without notice.
- A controlled document. Revisions will be advised.
- A complete revision. Remove previous issues from use.

Amendments  
No. | Date | Notes

PRELIMINARY



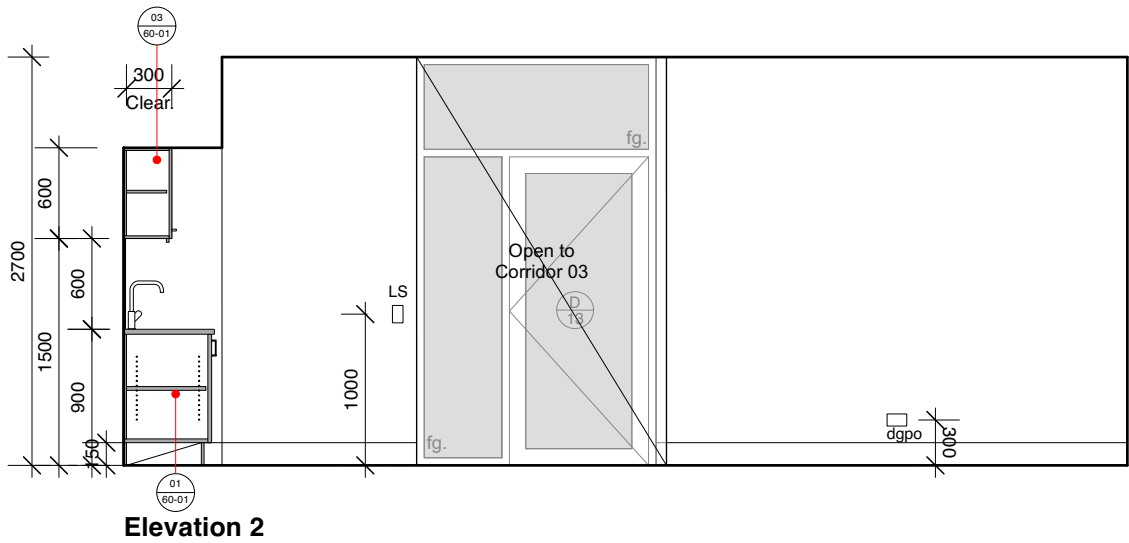
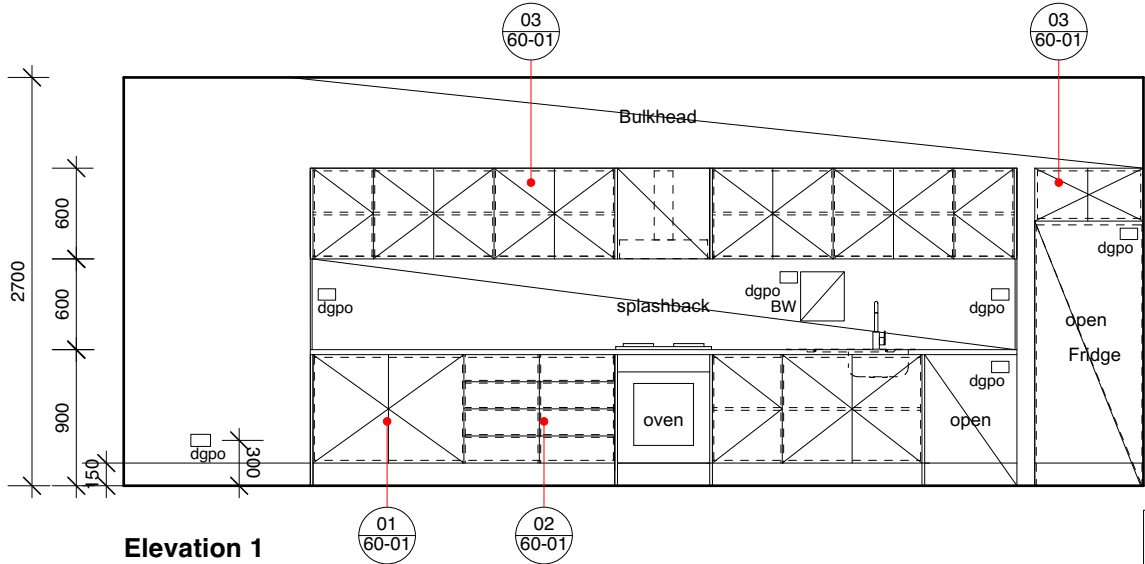
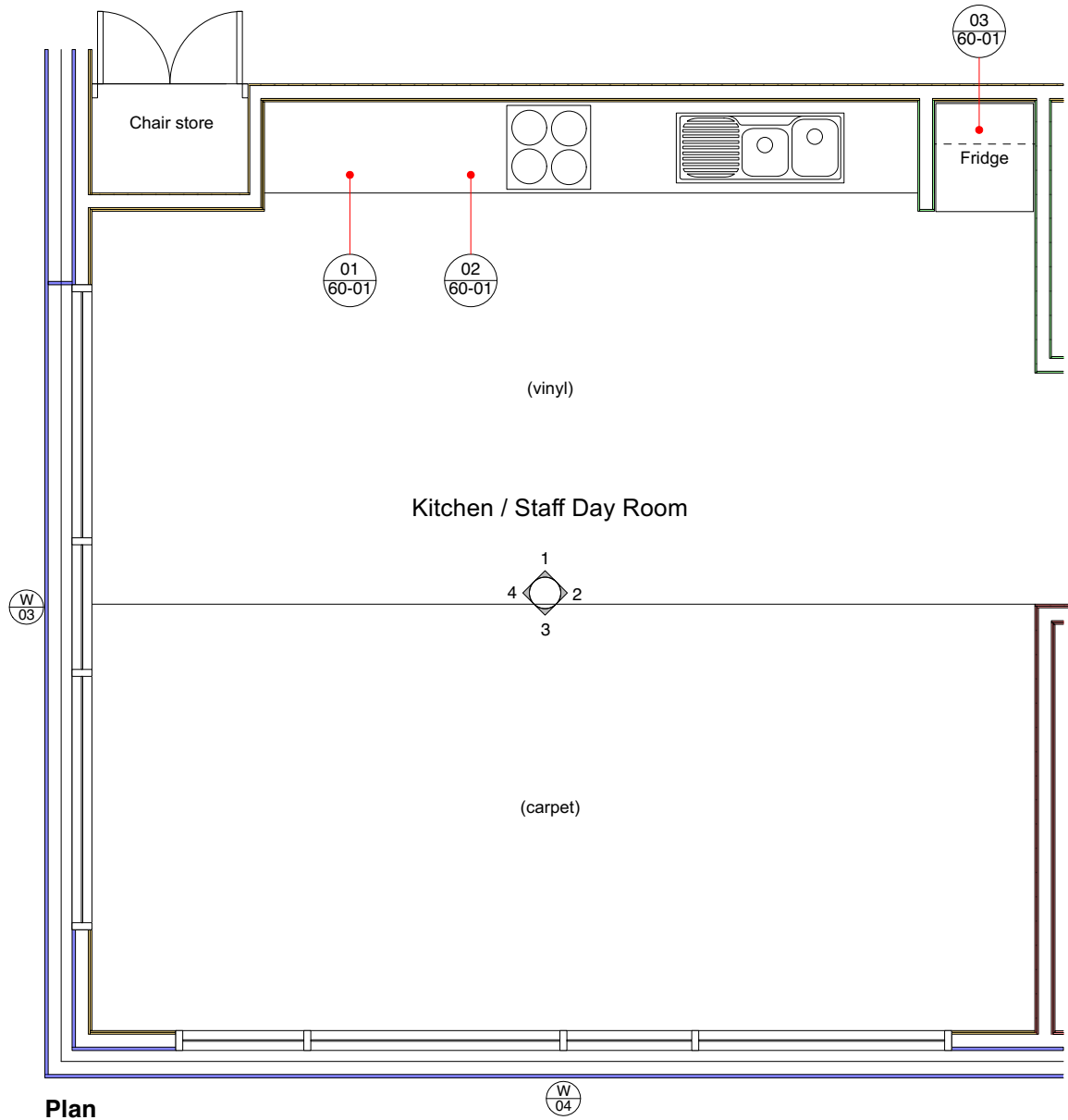
client  
**Department of Health**  
**Ambulance Tas**  
**King Island Ambulance Station**  
35 Edward Street, Currie, King Island, Tasmania  
tender no.

project  
**Ambulance Tas**  
**King Island Ambulance Station**  
drawing title  
**Circulation 02 & 03**  
**1:50 Room Layouts**  
project no. **RCA2410KI**

scale **1:50 @ A3**  
designed **RC** | checked **RCA**  
drawn **RH** | approved **RCA**  
printed **30th January 2025**  
drawing no. **RCA2410KI-40-05** | issue **DD**

**ROBERT CARROLL & ASSOCIATES ARCHITECTS**  
68 Elphin Road - East Launceston Tas. 7250 - Ph: 03 6334 6134  
rob@robertcarroll.com.au





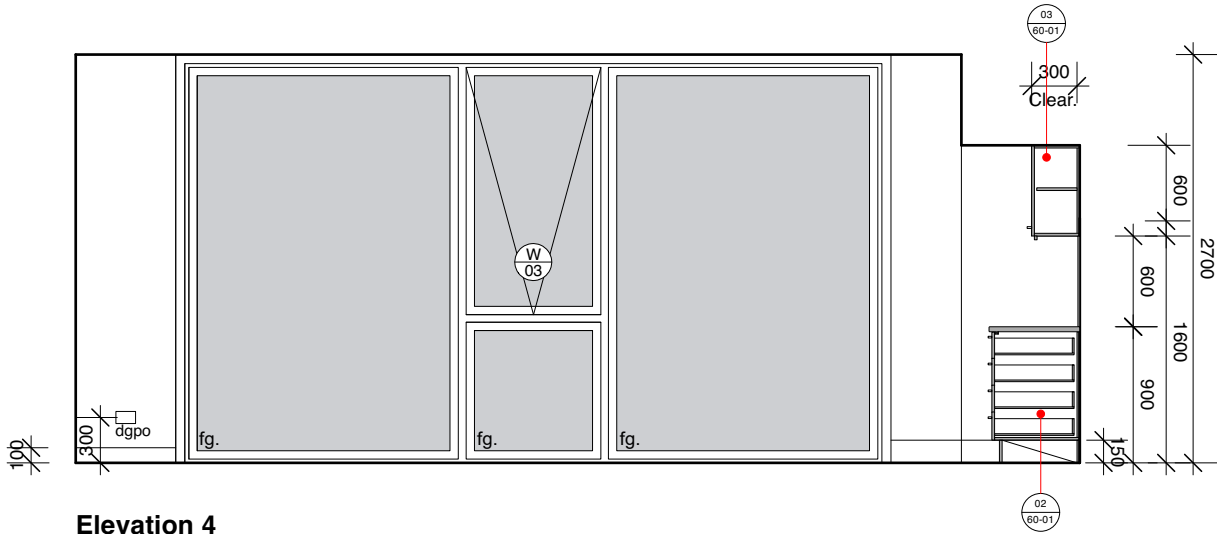
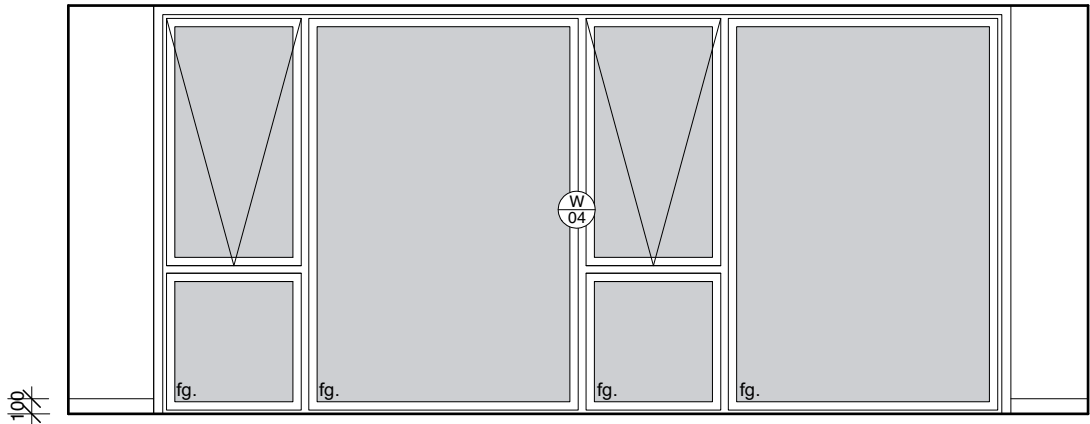
Note:

Group 1 items are supplied and installed by the contractor i.e. everything new as drawn.

Group 2 items are supplied by AT and installed by the contractor.

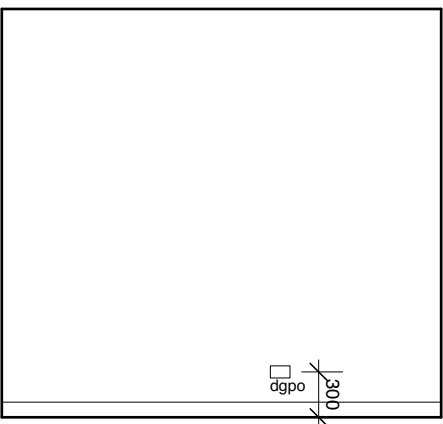
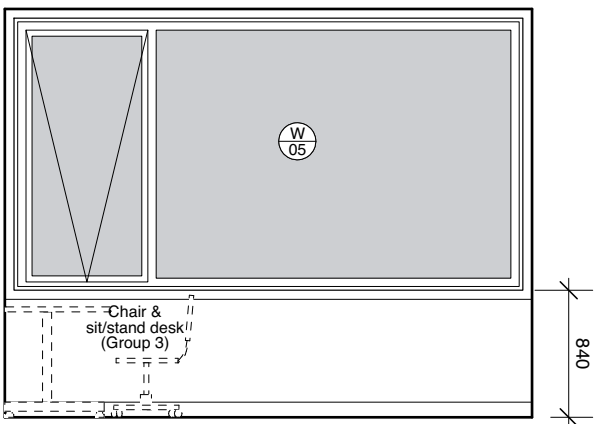
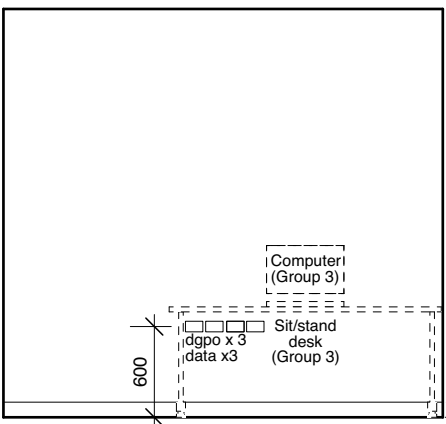
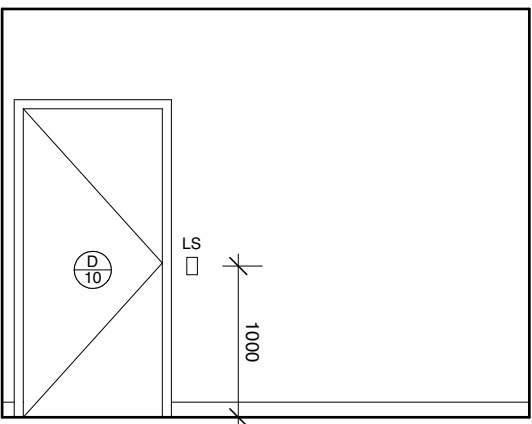
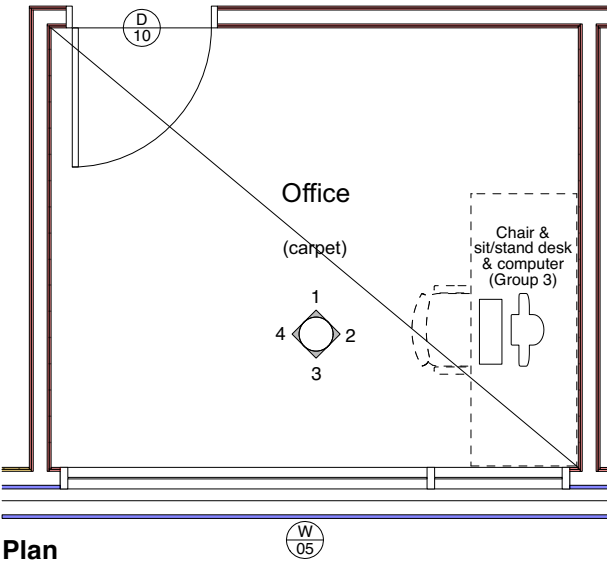
Group 3 items are supplied by AT and installed by AT.

All wall mounted dispensers, brackets and baskets are supplied by AT and installed by contractor. Exact location to be confirmed on site by AT.



Notes	
1. Do not scale drawings.	4. Verify all dimensions on site before commencement of work.
2. All dimensions in millimetres unless noted otherwise.	5. All drawings shall be read in conjunction with architects and consultants specifications, details and supplied additional documents.
3. All work carried out shall be in accordance with Australian Standards, the NCC, local authority by-laws & regulations and manufacturer's specifications.	6. Any discrepancies shall be referred to the Architect.
Amendments	
No.	Date
Notes	
<div>PRELIMINARY</div>	

<div>client</div> <div>Department of Health</div> <div></div> <div>Tasmania</div> <div>Explore the possibilities</div>	<div>project</div> <div>Ambulance Tas</div> <div>King Island Ambulance Station</div> <div>35 Edward Street, Currie, King Island, Tasmania</div> <div>tender no.</div>	<div>drawing title</div> <div>Kitchen / Staff Day Room</div> <div>1:50 Room Layouts</div> <div>project no. RCA2410KI</div>	<div>scale</div> <div>1:50 @ A3</div> <div>designed RC   checked RCA</div> <div>drawn RH   approved RCA</div> <div>printed 30th January 2025</div> <div>drawing no. RCA2410KI-40-06   issue DD</div>	<div>ROBERT CARROLL &amp; ASSOCIATES ARCHITECTS</div> <div>68 Elphin Road - East Launceston Tas. 7250 - Ph: 03 6334 6134</div> <div>rob@robertcarroll.com.au</div>

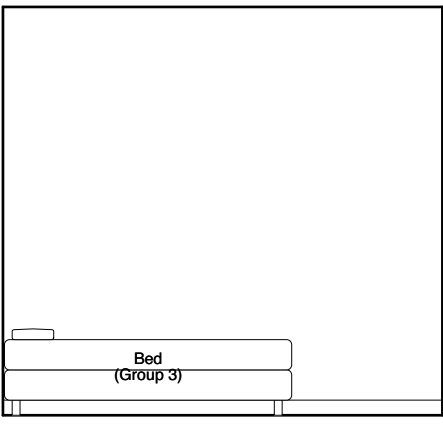
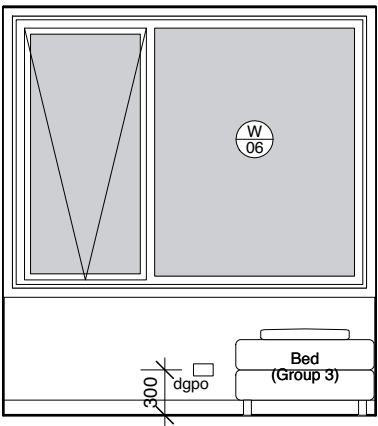
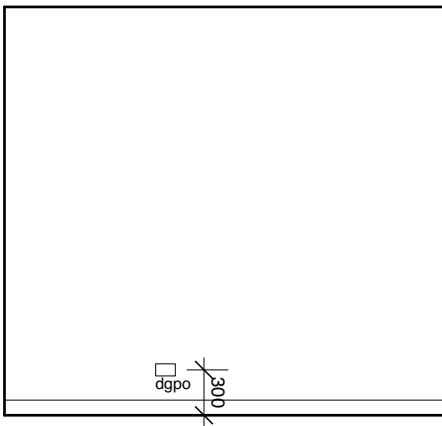
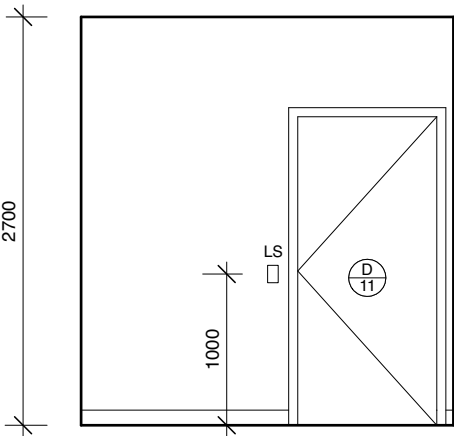
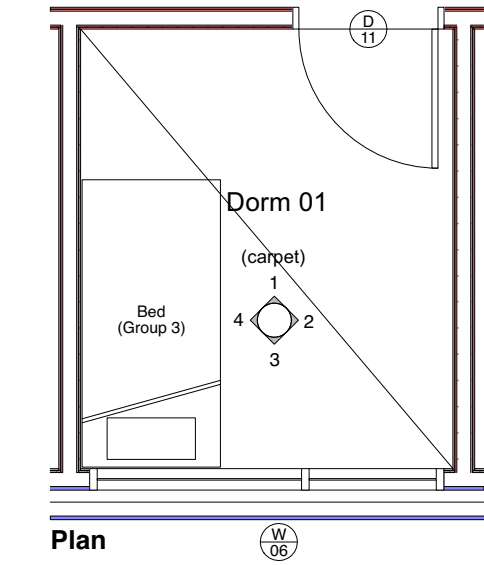


Elevation 1

Elevation 2

Elevation 3

Elevation 4

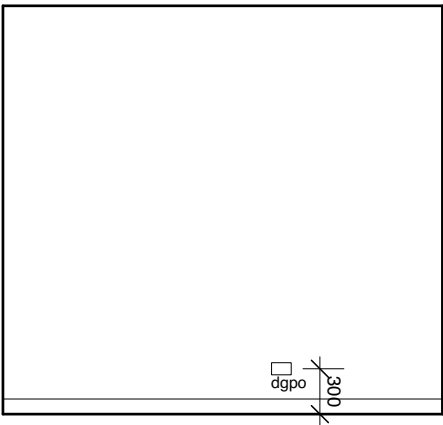
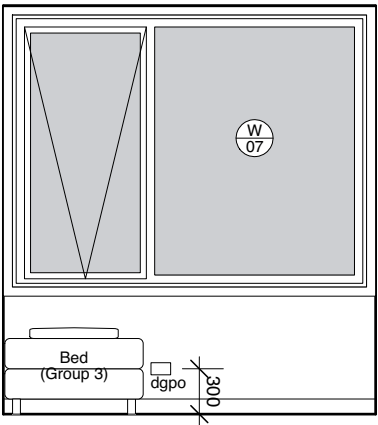
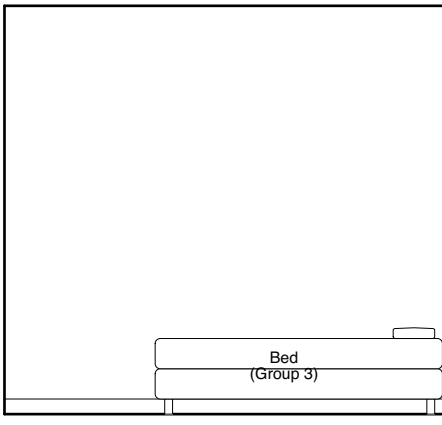
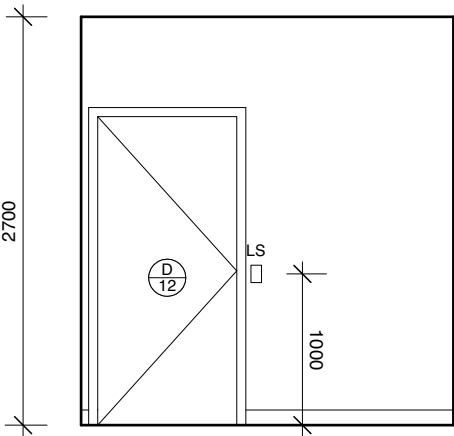
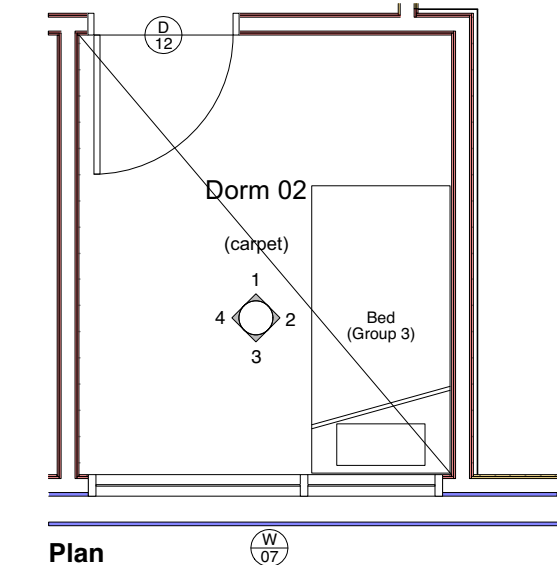


Elevation 1

Elevation 2

Elevation 3

Elevation 4



Elevation 1

Elevation 2

Elevation 3

Elevation 4

Notes

1. Do not scale drawings.
2. All dimensions in millimetres unless noted otherwise.
3. All work carried out shall be in accordance with Australian Standards, the NCC, local authority by-laws & regulations and manufacturer's specifications.
4. Verify all dimensions on site before commencement of work.
5. All drawings shall be read in conjunction with architects and consultants specifications, details and supplied additional documents.
6. Any discrepancies shall be referred to the Architect.

- The first issue of the document.
- Not controlled. Revisions may be made without notice.
- A controlled document. Revisions will be advised.
- A complete revision. Remove previous issues from use.

Amendments  
No. | Date | Notes

**PRELIMINARY**

client  
**Department of Health**  
  
Tasmania  
Explore the possibilities

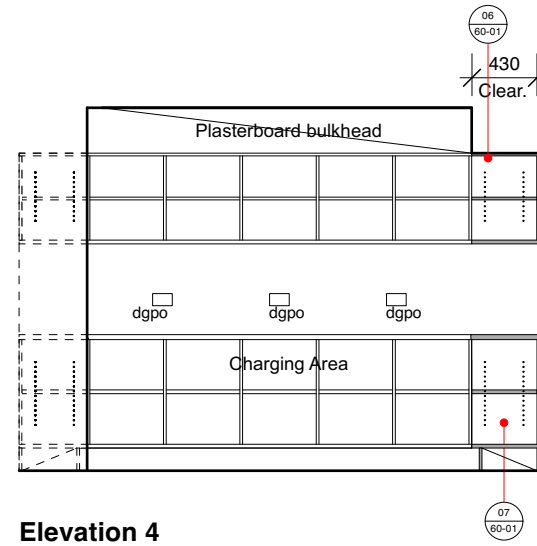
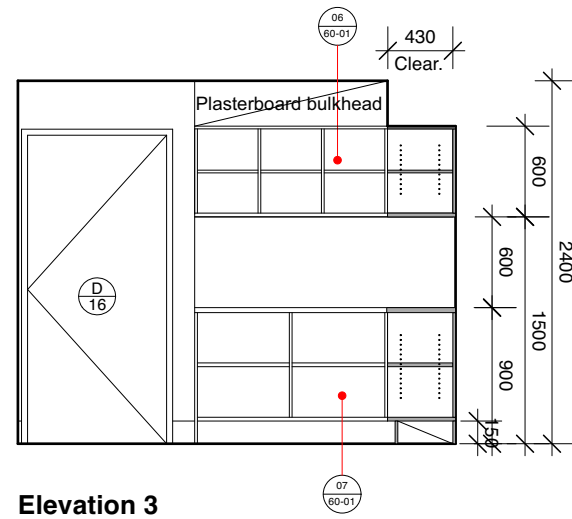
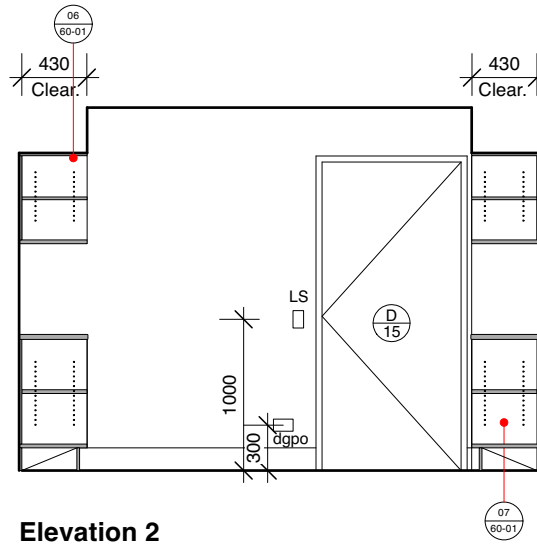
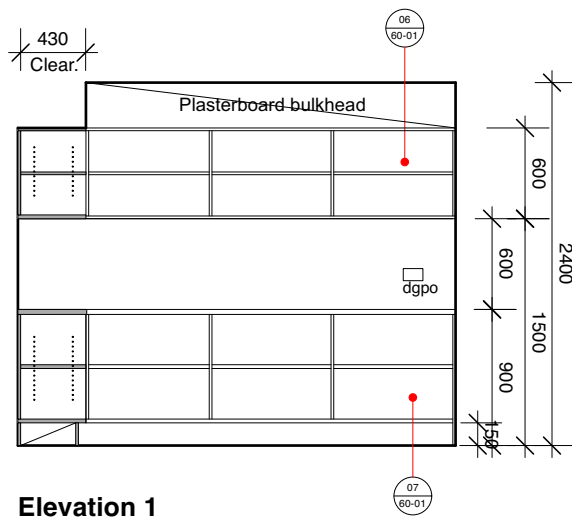
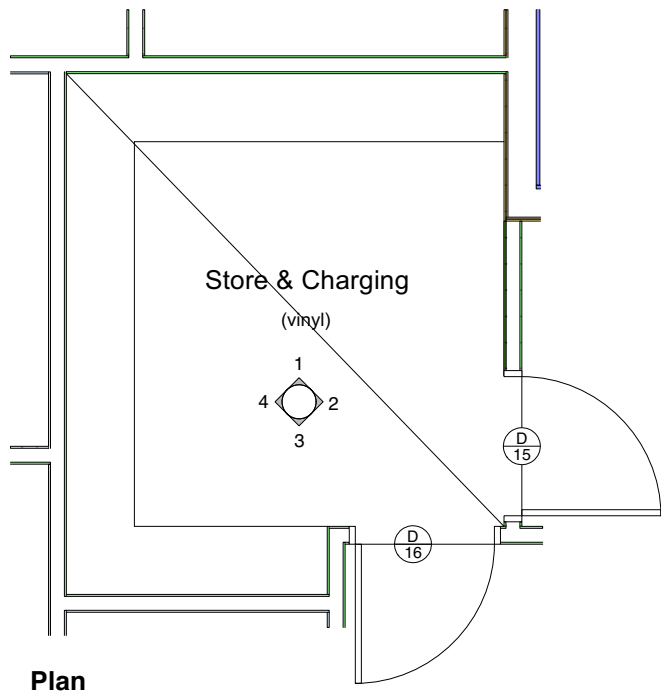
project  
**Ambulance Tas**  
**King Island Ambulance Station**  
35 Edward Street, Currie, King  
Island, Tasmania  
tender no.

drawing title  
**Office, Dorm 01 & 02**  
**1:50 Room Layouts**  
project no. **RCA2410KI**

scale **1:50 @ A3**  
designed RC | checked RCA  
drawn RH | approved RCA  
printed 30th January 2025  
drawing no. **RCA2410KI-40-07** | issue DD

**ROBERT CARROLL**  
**& ASSOCIATES**  
**ARCHITECTS**  
68 Elphin Road - East Launceston  
Tas. 7250 - Ph: 03 6334 6134  
rob@robertcarroll.com.au





Note:

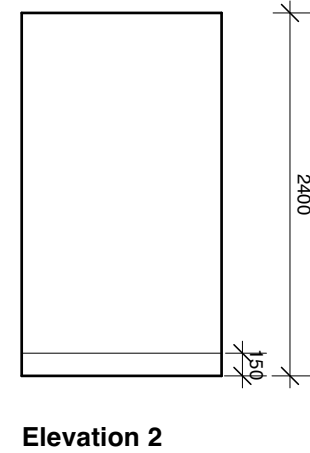
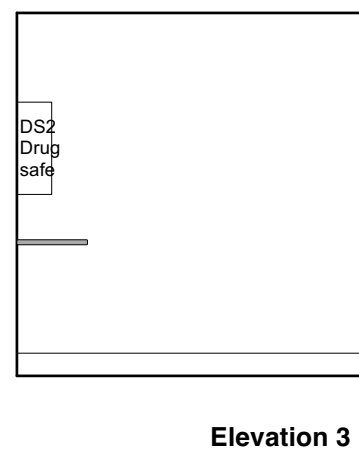
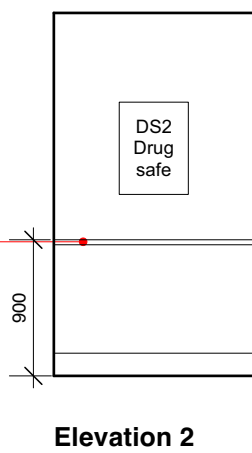
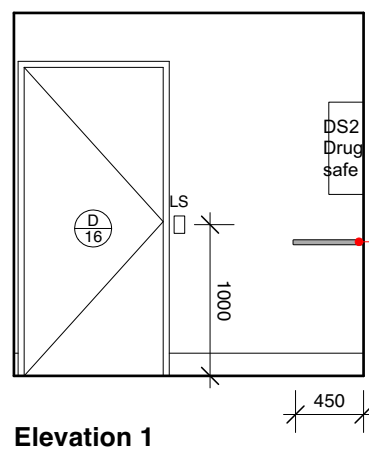
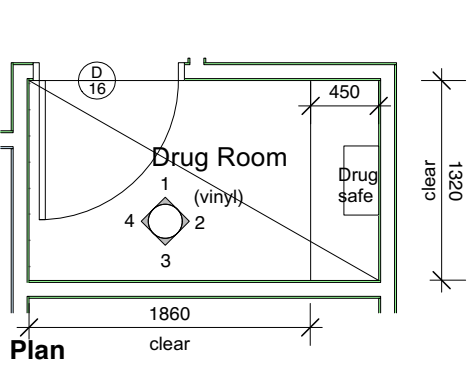
Group 1 items are supplied and installed by the contractor i.e. everything new as drawn.

Group 2 items are supplied by AT and installed by the contractor.

Group 3 items are supplied by AT and installed by AT.

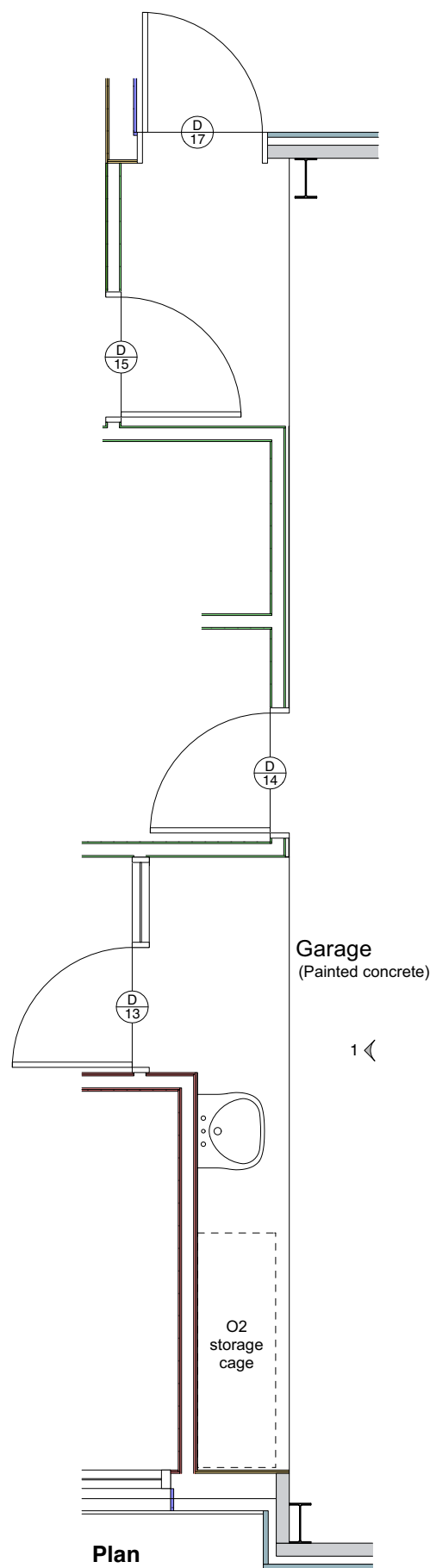
All wall mounted dispensers, brackets and baskets are supplied by AT and installed by contractor. Exact location to be confirmed on site by AT.

Note: Refer to sanitary & miscellaneous schedule for fixtures.

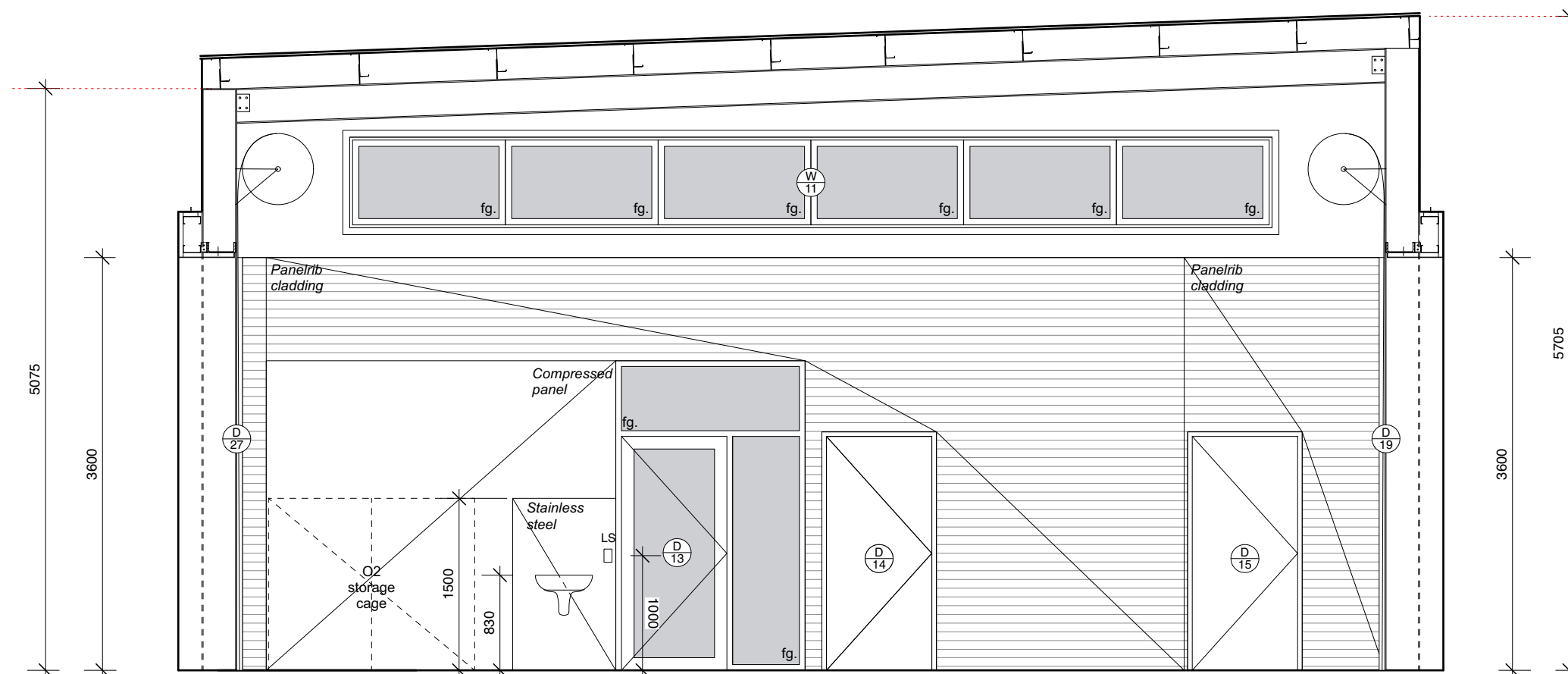


Notes		Amendments	
<div>1. Do not scale drawings.</div> <div>2. All dimensions in millimetres unless noted otherwise.</div> <div>3. All work carried out shall be in accordance with Australian Standards, the NCC, local authority by-laws &amp; regulations and manufacturer's specifications.</div>	<div>4. Verify all dimensions on site before commencement of work.</div> <div>5. All drawings shall be read in conjunction with architects and consultants specifications, details and supplied additional documents.</div> <div>6. Any discrepancies shall be referred to the Architect.</div>	No.	<div>Date</div> <div>Notes</div>
		<div>○ The first issue of the document.</div> <div>○ Not controlled. Revisions may be made without notice.</div> <div>● A controlled document. Revisions will be advised.</div> <div>○ A complete revision. Remove previous issues from use.</div>	<div>PRELIMINARY</div>

client		project		drawing title		scale		ROBERT CARROLL & ASSOCIATES ARCHITECTS	
Department of Health		Ambulance Tas		Store/Charging & Drug Room		1:50 @ A3		68 Elphin Road - East Launceston Tas. 7250 - Ph: 03 6334 6134	
King Island Ambulance Station		35 Edward Street, Currie, King Island, Tasmania		1:50 Room Layouts		designed RC   checked RCA		r o b @ r o b e r t c a r r o l l . c o m . a u	
						drawn RH   approved RCA			
						printed 30th January 2025			
						drawing no. RCA2410KI-40-09			
						issue DD			



Note: Refer to sanitary & miscellaneous schedule for fixtures.



### Elevation 1

Notes

1. Do not scale drawings.
2. All dimensions in millimetres unless noted otherwise.
3. All work carried out shall be in accordance with Australian Standards, the NCC, local authority by-laws & regulations and manufacturer's specifications.
4. Verify all dimensions on site before commencement of work.
5. All drawings shall be read in conjunction with architects and consultants specifications, details and supplied additional documents.
6. Any discrepancies shall be referred to the Architect.

- ☐ The first issue of the document.
- ☐ Not controlled. Revisions may be made without notice.
- ☒ A controlled document. Revisions will be advised.
- ☐ A complete revision. Remove previous issues from use.

Amendments		
No.	Date	Notes

# PRELIMINARY

client

**Department of Health**



Tasmania

Explore the possibilities

project

**Ambulance Tas  
King Island Ambulance Station**

**35 Edward Street, Currie, King  
Island, Tasmania**

---

tender no.

drawing title	
<b>Garage 1:50 Room Layouts pg 01</b>	
project no.	<b>RCA2410KI</b>

scale	1:50 @ A3		
designed	RC	checked	RCA
drawn	RH	approved	RCA
printed	30th January 2025		
drawing no.	RCA2410KI-40-10		issue

**ROBERT CARROLL  
& ASSOCIATES  
ARCHITECTS**

68 Elphin Road - East Launceston  
Tas. 7250 - Ph: 03 6334 6134  
rob@robertcarroll.com.au

Note:

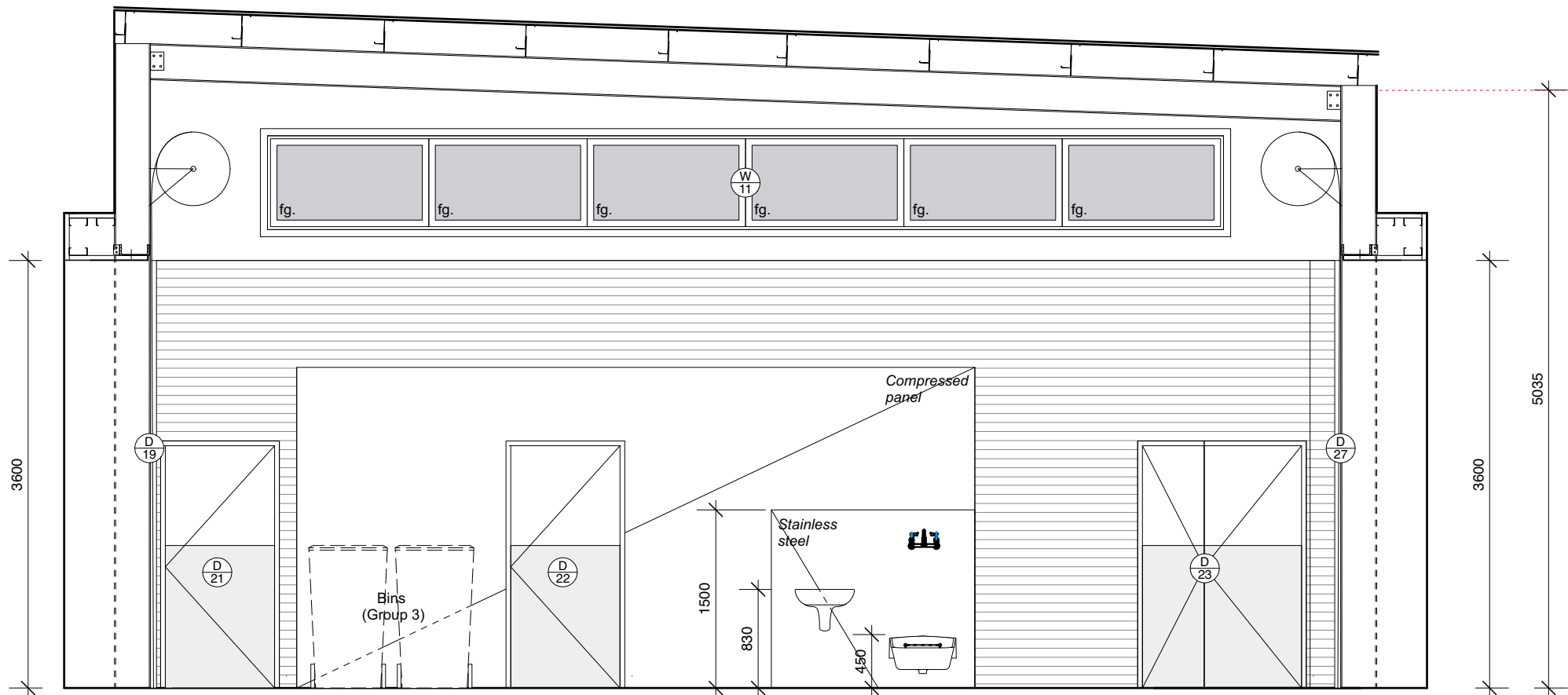
Group 1 items are supplied and installed by the contractor i.e. everything new as drawn.

Group 2 items are supplied by AT and installed by the contractor.

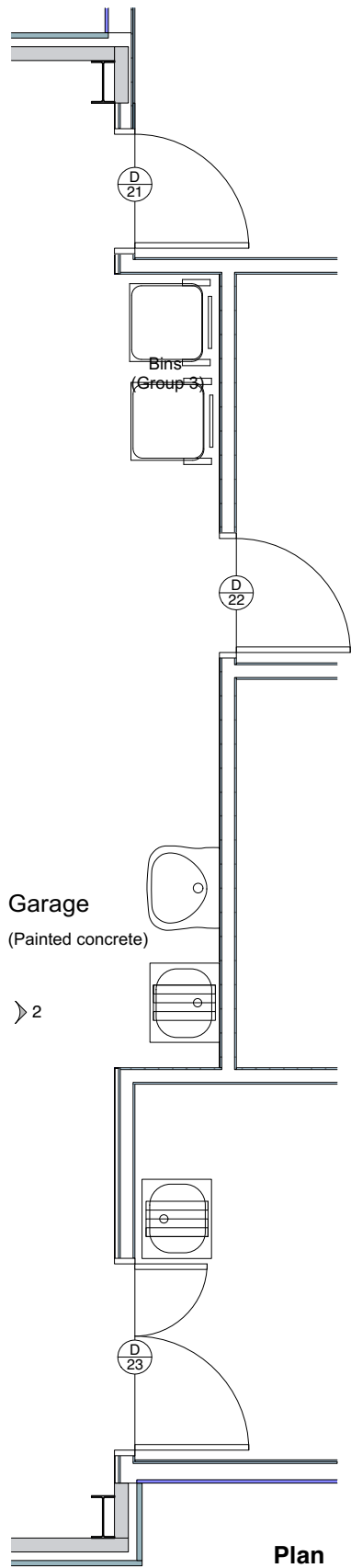
Group 3 items are supplied by AT and installed by AT.

All wall mounted dispensers, brackets and baskets are supplied by AT and installed by contractor. Exact location to be confirmed on site by AT.

Note: Refer to sanitary & miscellaneous schedule for fixtures.



Elevation 2



Plan

Notes

1. Do not scale drawings.
2. All dimensions in millimetres unless noted otherwise.
3. All work carried out shall be in accordance with Australian Standards, the NCC, local authority by-laws & regulations and manufacturer's specifications.
4. Verify all dimensions on site before commencement of work.
5. All drawings shall be read in conjunction with architects and consultants specifications, details and supplied additional documents.
6. Any discrepancies shall be referred to the Architect.

- The first issue of the document.
- Not controlled. Revisions may be made without notice.
- A controlled document. Revisions will be advised.
- A complete revision. Remove previous issues from use.

Amendments  
No. | Date | Notes

**PRELIMINARY**

client  
**Department of Health**



Tasmania  
Explore the possibilities

project  
**Ambulance Tas  
King Island Ambulance Station**

35 Edward Street, Currie, King  
Island, Tasmania

tender no. \_\_\_\_\_

drawing title  
**Garage  
1:50 Room Layouts  
pg 02**

project no. **RCA2410KI**

scale **1:50 @ A3**

designed	RC	checked	RCA
drawn	RH	approved	RCA
printed	30th January 2025		
drawing no.	<b>RCA2410KI-40-11</b>		issue DD

**ROBERT CARROLL  
& ASSOCIATES  
ARCHITECTS**

68 Elphin Road - East Launceston  
Tas. 7250 - Ph: 03 6334 6134  
rob@robertcarroll.com.au

Note:

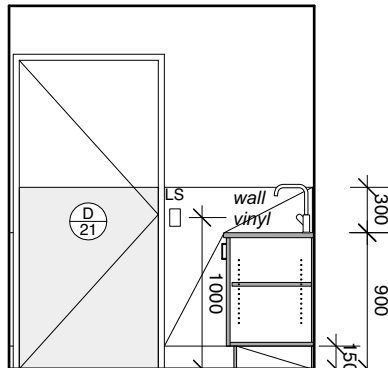
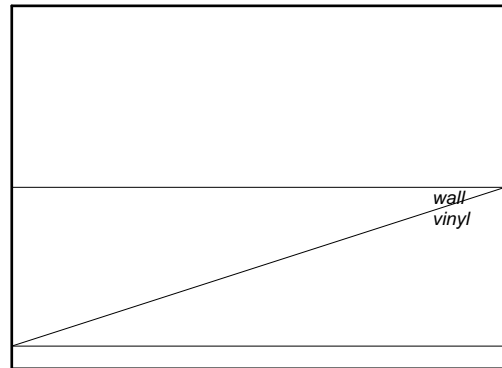
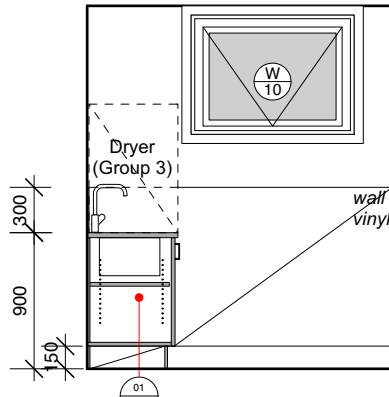
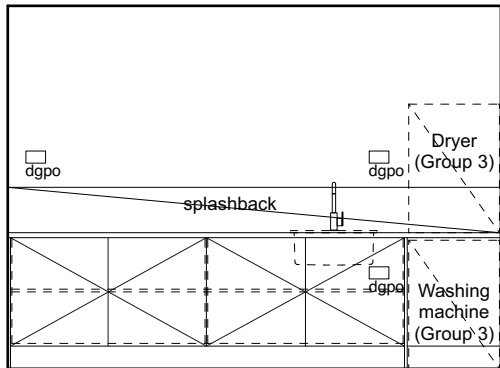
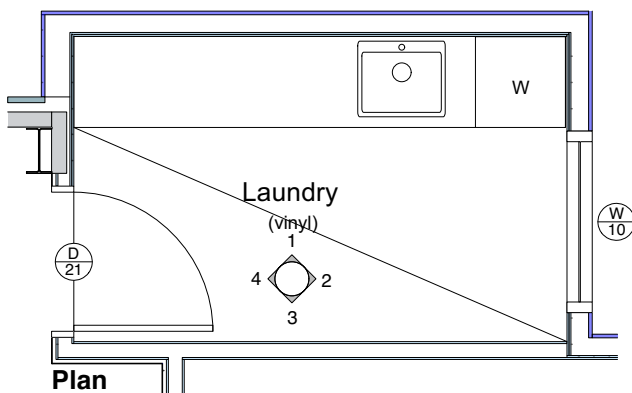
Group 1 items are supplied and installed by the contractor i.e. everything new as drawn.

Group 2 items are supplied by AT and installed by the contractor.

Group 3 items are supplied by AT and installed by AT.

All wall mounted dispensers, brackets and baskets are supplied by AT and installed by contractor. Exact location to be confirmed on site by AT.

Note: Refer to sanitary & miscellaneous schedule for fixtures.

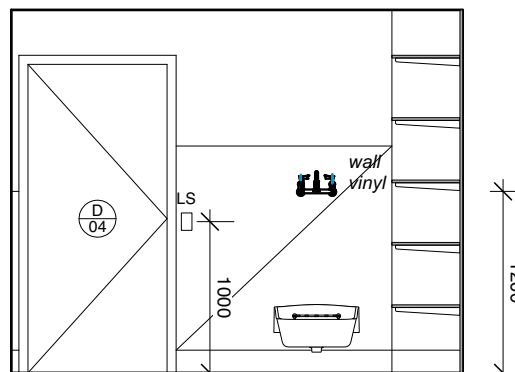
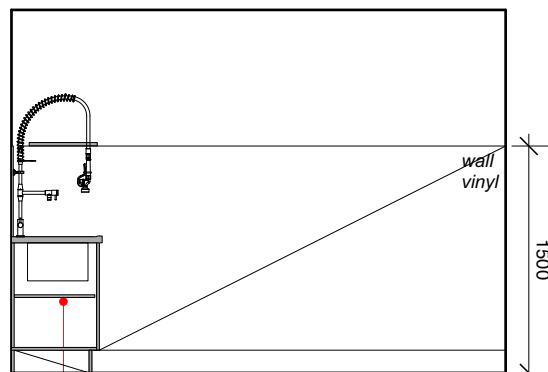
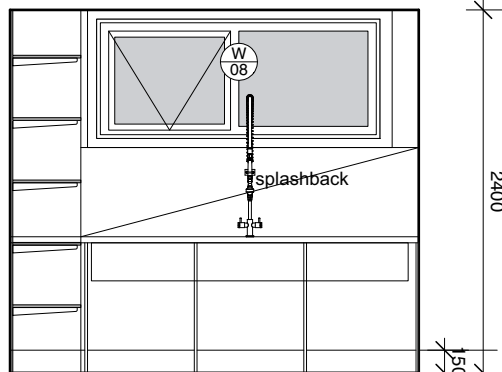
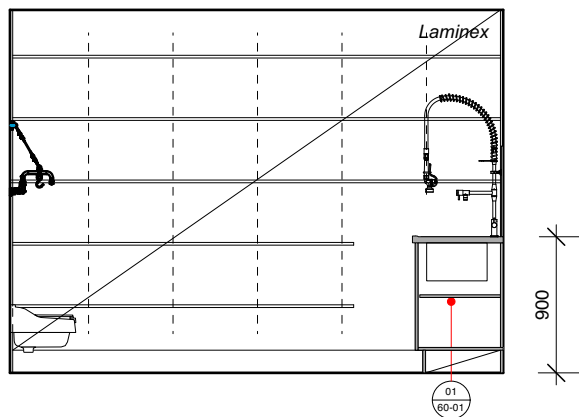
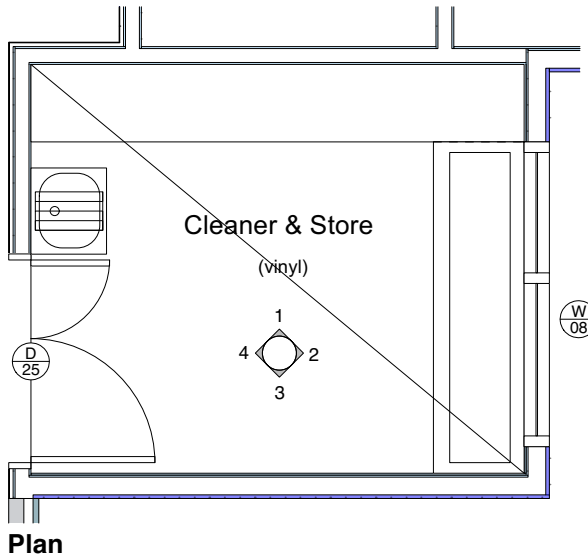


Elevation 1

Elevation 2

Elevation 3

Elevation 4



Elevation 1

Elevation 2

Elevation 3

Elevation 4

#### Notes

1. Do not scale drawings.
2. All dimensions in millimetres unless noted otherwise.
3. All work carried out shall be in accordance with Australian Standards, the NCC, local authority by-laws & regulations and manufacturer's specifications.
4. Verify all dimensions on site before commencement of work.
5. All drawings shall be read in conjunction with architects and consultants specifications, details and supplied additional documents.
6. Any discrepancies shall be referred to the Architect.

- ☐ The first issue of the document.
- ☐ Not controlled. Revisions may be made without notice.
- ☒ A controlled document. Revisions will be advised.
- ☐ A complete revision. Remove previous issues from use.

Amendments  
No. | Date | Notes

**PRELIMINARY**

client  
**Department of Health**  
  
Tasmania  
Explore the possibilities

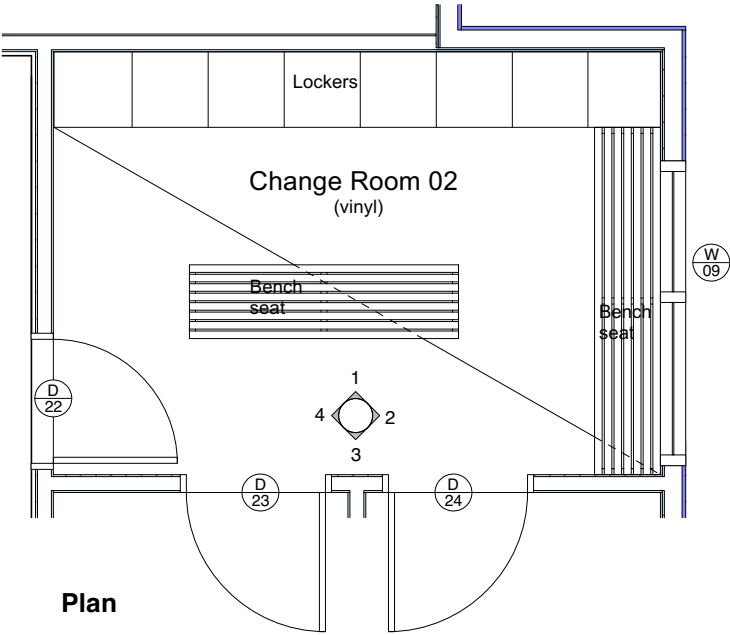
project  
**Ambulance Tas  
King Island Ambulance Station**  
35 Edward Street, Currie, King  
Island, Tasmania  
tender no. \_\_\_\_\_

drawing title  
**Laundry, Cleaner &  
Store**  
**1:50 Room Layouts**  
project no. **RCA2410KI**

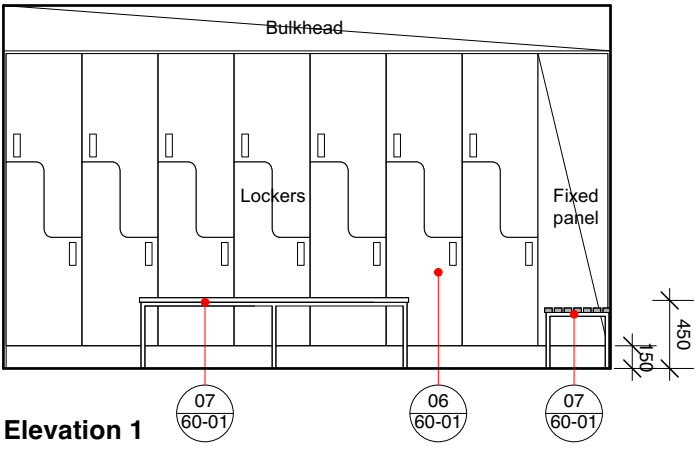
scale **1:50 @ A3**  
designed **RC** | checked **RCA**  
drawn **RH** | approved **RCA**  
printed **30th January 2025**  
drawing no. **RCA2410KI-40-12** | issue **DD**

**ROBERT CARROLL  
& ASSOCIATES**  
**ARCHITECTS**  
68 Elphin Road - East Launceston  
Tas. 7250 - Ph: 03 6334 6134  
rob@robertcarroll.com.au

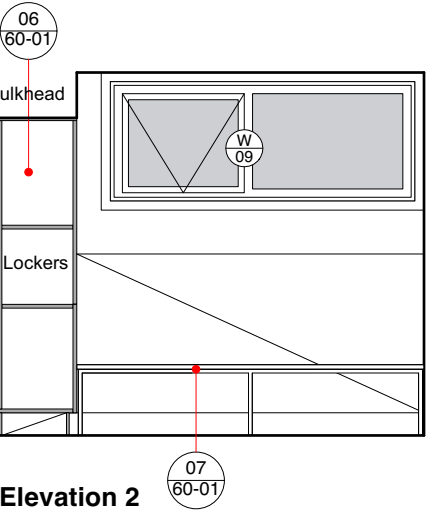




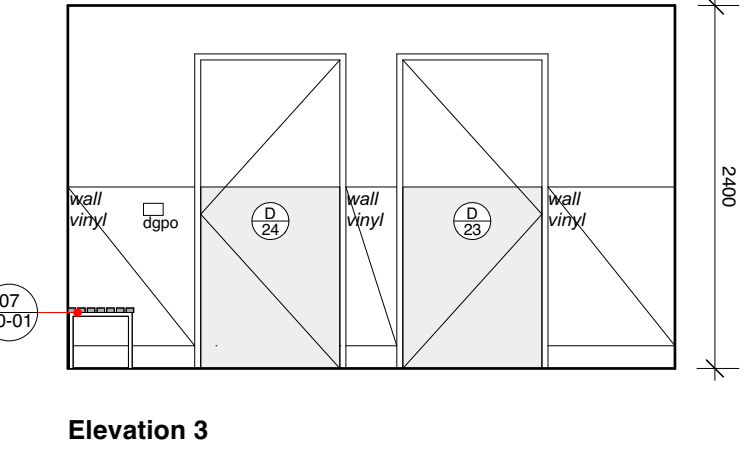
Plan



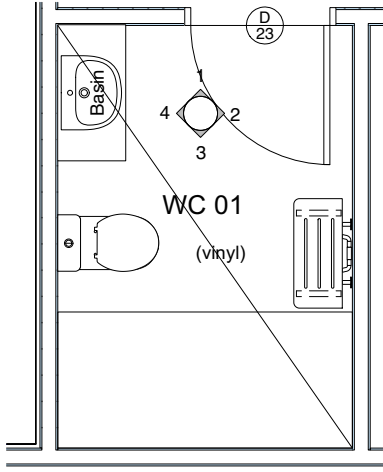
Elevation 1



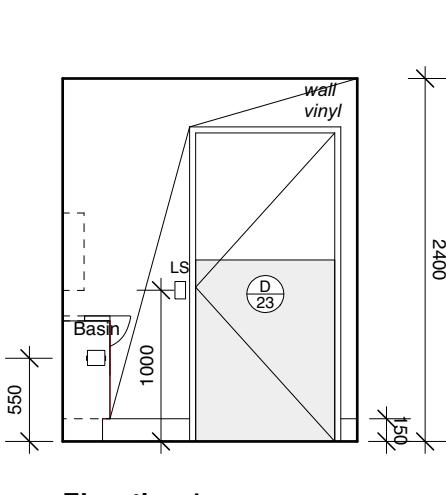
Elevation 2



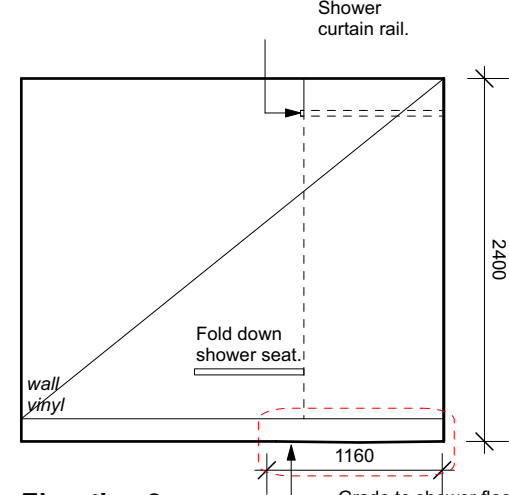
Elevation 3



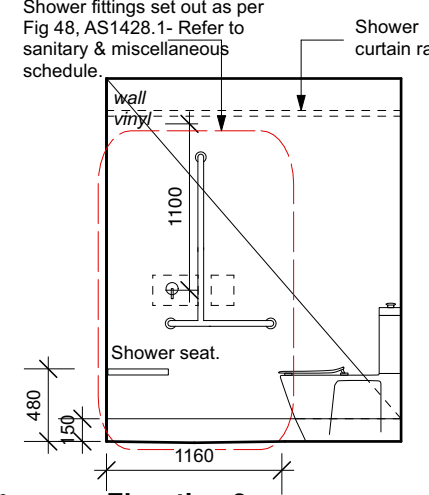
Plan



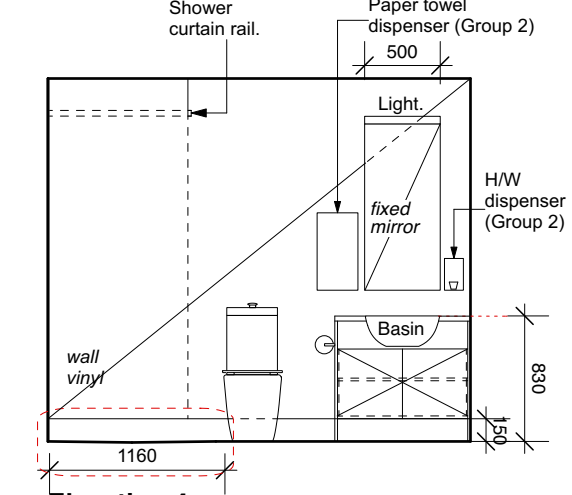
Elevation 1



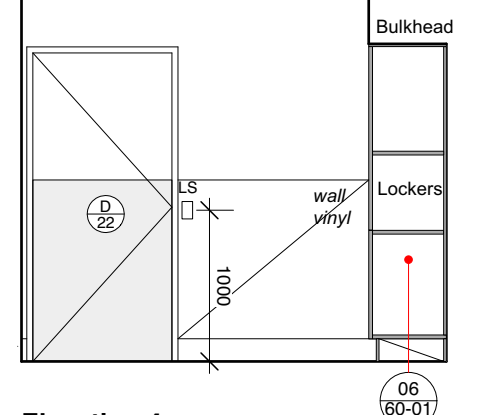
Elevation 2



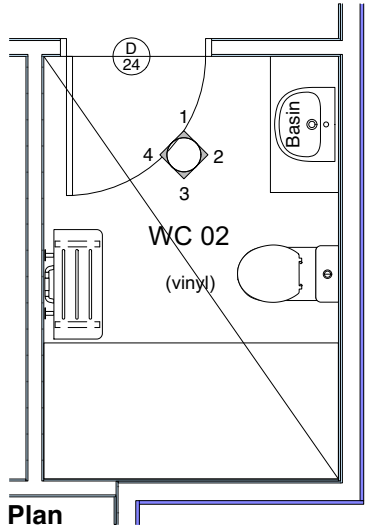
Elevation 3



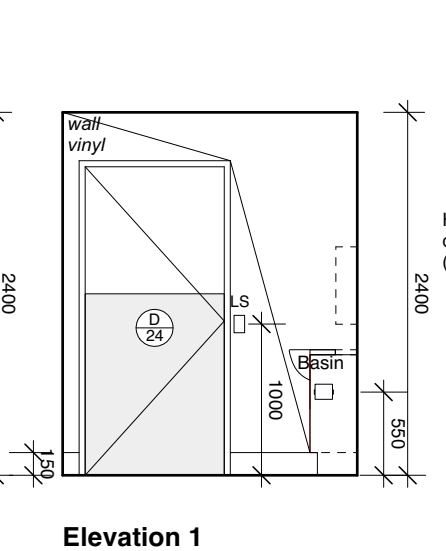
Elevation 4



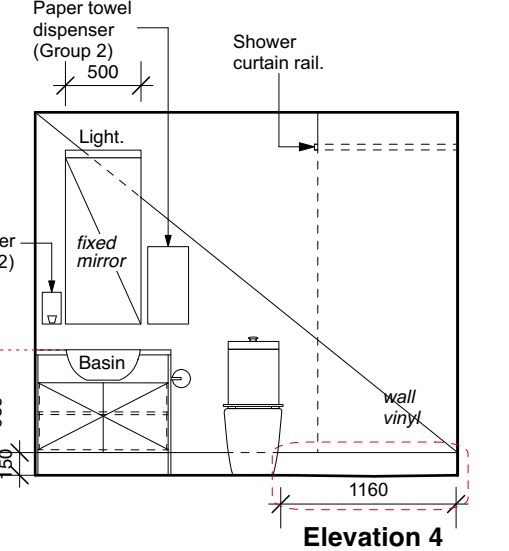
Elevation 4



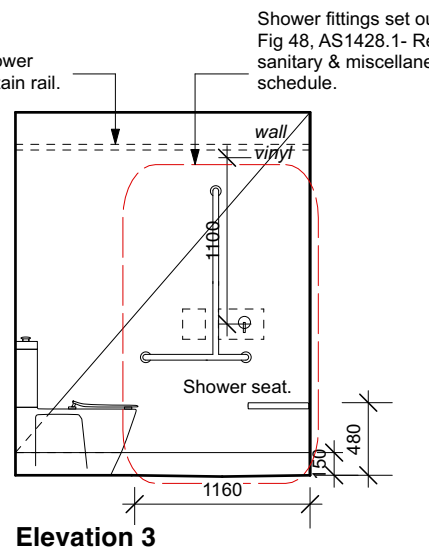
Plan



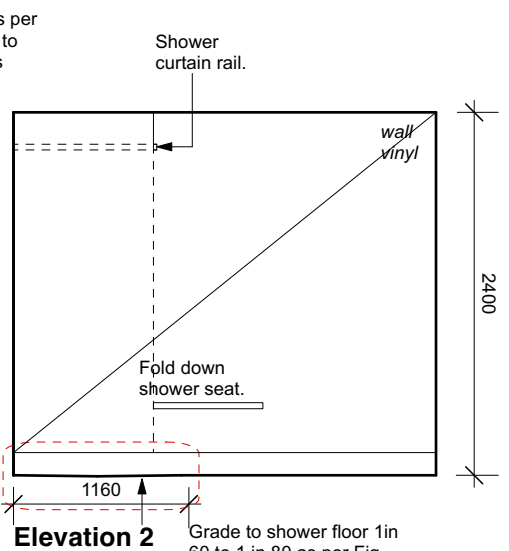
Elevation 1



Elevation 4



Elevation 3



Elevation 2

Note:  
Group 1 items are supplied and installed by the contractor i.e. everything new as drawn.  
Group 2 items are supplied by AT and installed by the contractor.  
Group 3 items are supplied by AT and installed by AT.  
All wall mounted dispensers, brackets and baskets are supplied by AT and installed by contractor. Exact location to be confirmed on site by AT.

Note: Refer to sanitary & miscellaneous schedule for fixtures.

**Notes**

- Do not scale drawings.
- All dimensions in millimetres unless noted otherwise.
- All work carried out shall be in accordance with Australian Standards, the NCC, local authority by-laws & regulations and manufacturer's specifications.
- Verify all dimensions on site before commencement of work.
- All drawings shall be read in conjunction with architects and consultants specifications, details and supplied additional documents.
- Any discrepancies shall be referred to the Architect.

The first issue of the document.  
Not controlled. Revisions may be made without notice.  
A controlled document. Revisions will be advised.  
A complete revision. Remove previous issues from use.

Amendments  
No. | Date | Notes

**PRELIMINARY**

client  
**Department of Health**

project  
**Ambulance Tas  
King Island Ambulance Station**

35 Edward Street, Currie, King Island, Tasmania

drawing title  
**Change Room 02,  
WC 01 & 02  
1:50 Room Layouts**

project no. **RCA2410KI**

scale **1:50 @ A3**

designed **RC** | checked **RCA**

drawn **RH** | approved **RCA**

printed **30th January 2025**

drawing no. **RCA2410KI-40-13** | issue **DD**

**ROBERT CARROLL & ASSOCIATES ARCHITECTS**

68 Elphin Road - East Launceston Tas. 7250 - Ph: 03 6334 6134  
rob@robertcarroll.com.au